
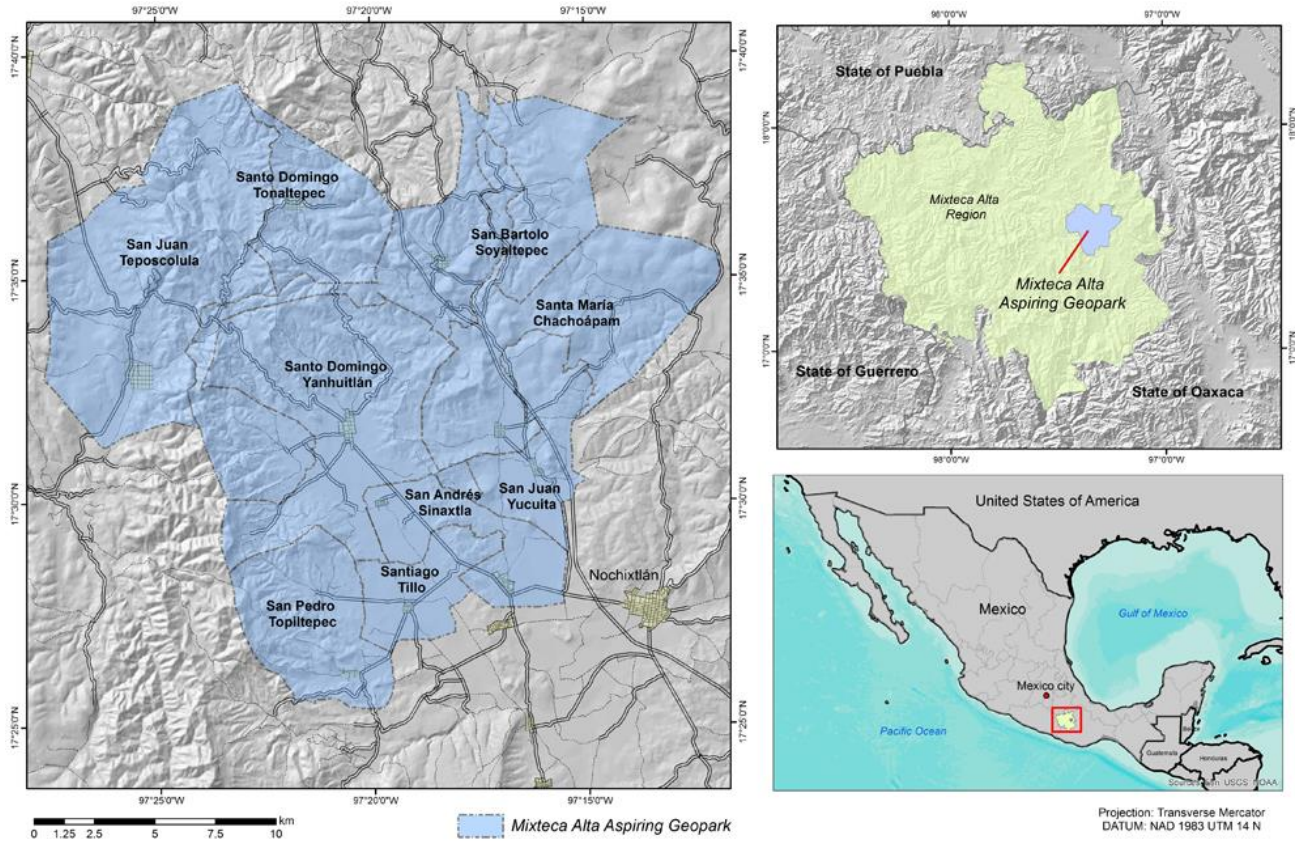
 <p>United Nations Educational, Scientific and Cultural Organization</p>  <p>UNESCO Global Geoparks</p>	<p>Applicant UNESCO Global Geopark</p> <p>name, country</p> <p>geographical and geological summary</p>
---	---

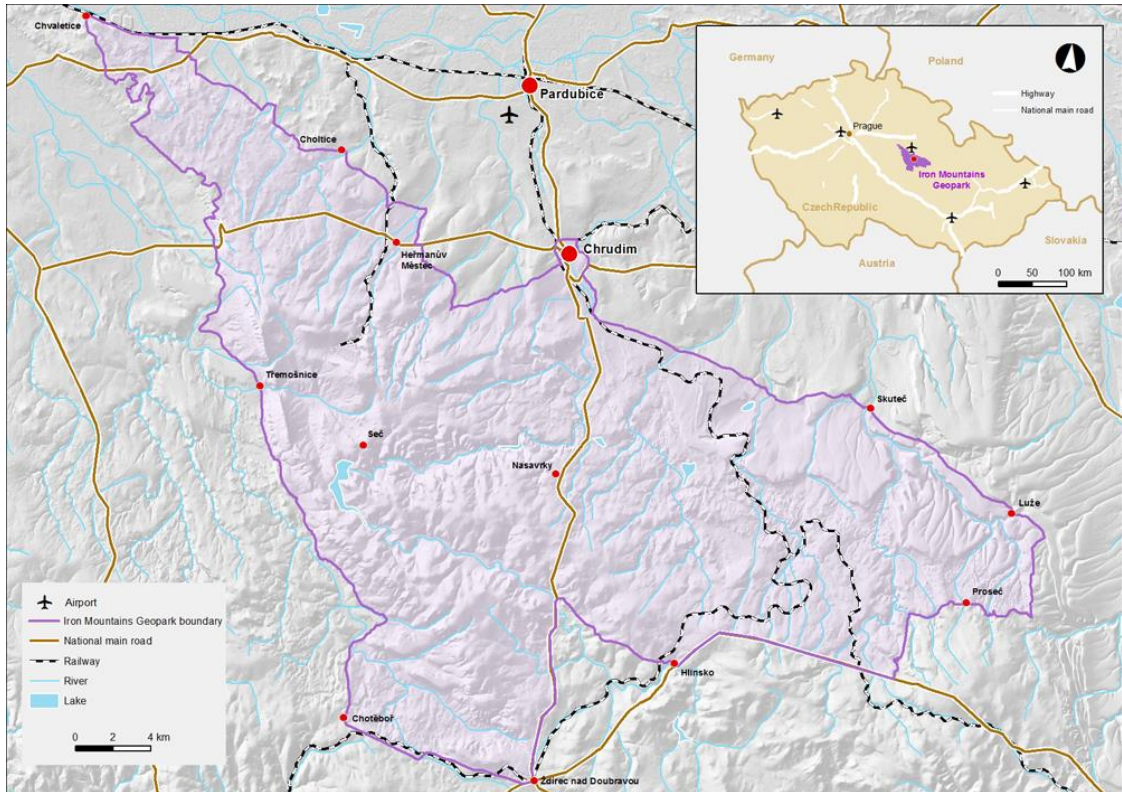


1. Physical and human geography- 1500 characters

Including for example: location, geographical coordinates, surface area, distance to main cities/to the border, landscape, relief type (mountain, plains, valleys, caves...), maximum and minimum elevation, climate, nature, administrative region and country, number of inhabitants, economic activity, settlements, infrastructure, etc.

2. Geological features and geology of international significance – 1500 characters

 <p>United Nations Educational, Scientific and Cultural Organization</p>  <p>UNESCO Global Geoparks</p>	<p>Applicant UNESCO Global Geopark name, country</p> <p>geographical and geological summary</p>
---	--



1. Physical and human geography- 1500 characters

Including for example: location, geographical coordinates, surface area, distance to main cities/to the border, landscape, relief type (mountain, plains, valleys, caves...), maximum and minimum elevation, climate, nature, administrative region and country, number of inhabitants, economic activity, settlements, infrastructure, etc.

2. Geological features and geology of international significance – 1500 characters