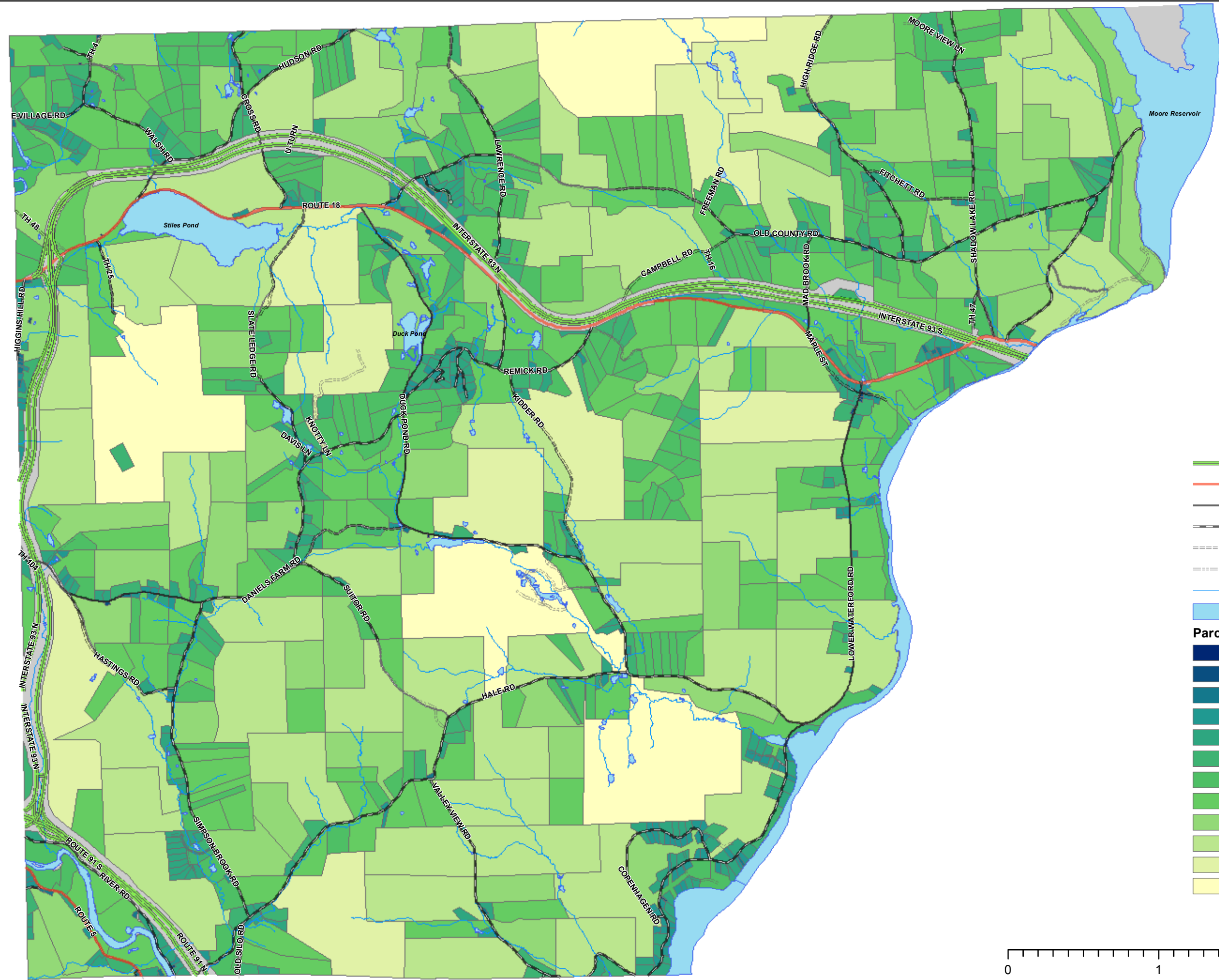


Town of Waterford Parcel distribution by size

02/12/2015



- Interstate
 - US & State Highway
 - Paved Town Road
 - Unpaved Town Road
 - Class 4 Town Road
 - Private Road
 - Streams
 - Lakes, Ponds & Rivers
- Parcel Sizes**
- Under 0.25 acres (14)
 - 0.25 acres to 0.49 acres (12)
 - 0.5 acres to 0.99 acre (39)
 - 1 acre to 1.99 acres (142)
 - 2 acres to 4.99 acres (231)
 - 5 acres to 9.99 acres (116)
 - 10 acres to 19.99 acres (195)
 - 20 acres to 49.99 acres (141)
 - 50 acres to 99.99 acres (58)
 - 100 acres to 199.99 acres (46)
 - 200 acres to 299.99 acres (9)
 - Over 300 acres (4)

