



Eagle Eye Anesthesia, Inc.

Specializing in Veterinary Anesthesia Equipment Sales and Service

Millennium

Veterinary Anesthesia Machine

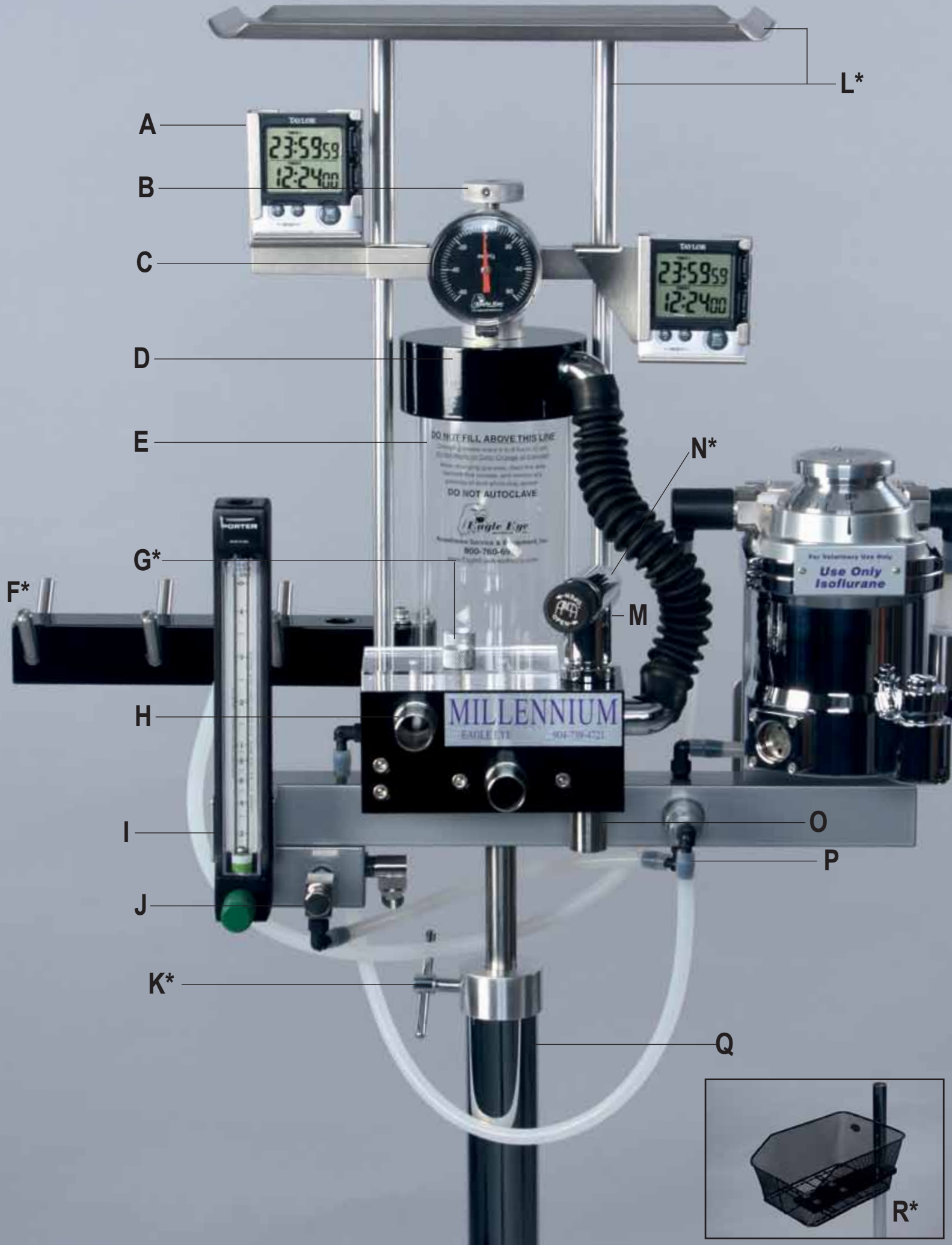
Celebrating it's 20th Anniversary as
The Most Dependable Anesthesia
Machine in the Industry

- Over 2500 units sold worldwide including leading teaching universities, research facilities, hospitals, and zoos
- Manufacturer direct for the best price and service
- 5 or 10 year warranty
- Made in the USA



Custom Colors Available at No Extra Charge





A

B

C

D

E

G*

H

I

J

K*

L*

N*

M

Use Only Isoflurane

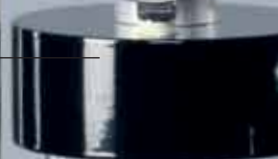
O

P

Q

R*

F*



The Millennium



- A Timer Bracket Assembly** - (Shown as option on left or right) Allows individual and overall surgery time to be recorded. Handy for keeping track of soda lime usage.
- B One Knob Easy Closure:** Change soda lime easily & when closed “no leaks”. Seals w/ o-rings not costly gaskets.
- C Manometer** - This large pressure gauge allows precise control of manual lung ventilation.
- D Custom Colors:** The Millennium is now made from solid machined aluminum and powder coated.
- E Soda Lime Canister** - Made of sturdy ¼-inch thick acrylic. Industry standard is 1/8-inch thick.
- F* Millennium Bag Hanger Assembly (Adjustable)** - Holds up to 30 bags & allows bags to dry completely.
- G* Check Valve Cover Kit (Knob Style - Optional)** - Simple and quick removal of check valve cover by turning two knobs will allow check valves to be wiped clean of moisture.
- H Check Valves** feature mica discs which emit a low audible “click” with each inhalation/exhalation breath. Mica is impervious to moisture & anesthetics and will not warp.
- I Porter O2 Flowmeter (.2cc-4LPM)** - Comes w/ new torque guard needle valve assembly which stops users from over tightening. Other manufacturer’s needle valves cost up to \$160.00 per valve. **HUGE COST SAVINGS OVER THE LIFETIME OF AN ANESTHESIA MACHINE!**
- J Clippard O2 Flush Valve** — Finish/material: nickel plated brass. 2 speeds (fast or slow).
- K* Height Adjustment Assembly** - Allows height of Millennium to be adjusted an additional 18 inches.
- L* Millennium Tray Assembly** - Ideal placement and height to view monitor during surgery.
- M Pop-off Scavenger Valve** - Constructed of chrome-plated brass. New floating ball valve feature.
- N* Occlusion Valve** - Designed for faster and safer bagging of an animal. With the push of a button, it stops the flow of gas from coming out of the pop-off scavenger valve. No need to turn pop-off scavenger valve on and off.
- O Bag Bushing** - Holds re-breathing bag onto anesthesia machine.
- P Common Gas Outlet** - Provides an area for non-re-breathing kits to plug into. Also allows O2 quick flushing when using non-re-breathing kits, or re-breathing kits. All-metal quick connect design.
- Q Chrome polished pole** on top of five-legged base (metal) for mobility and stability.
- R* Basket Assembly** - Holds bags, hoses, endotracheal tube adapters, masks, etc.

***New Options
Available**

**Additional customer configurations can be made to your specifications.
Best warranty in the industry: 5 year standard, or 10 year (*with annual service*).**

Toll Free (800) 760-6976

Millennium

Back View

A* New Common Gas Outlet Kit (Press fit or Quick connect style) - Easier/safer connect & disconnect.

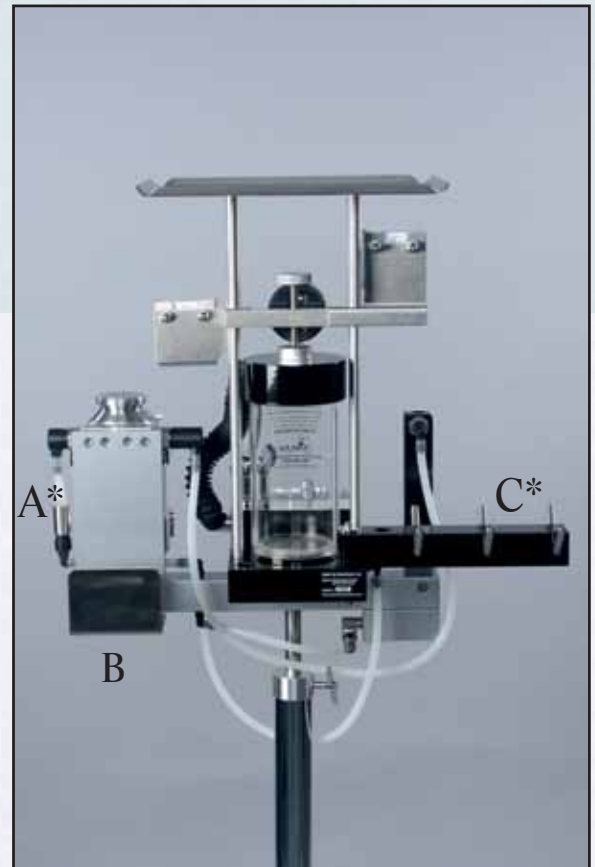
B Hose Holder - Convenient for hanging hoses... keeping surgery areas neat.

C* Millennium Bag Hanger - 6 arms, holding up to 30 re-breathing bags, & allows bags to dry.

***Double Vaporizer Bracket (not shown)** - Allows for use of two inhalation agents (ex. Isoflurane and Sevoflurane).

Additional Equipment Options:

- Precision Vaporizers (new or rebuilt)
- Nitrous Oxide Flowmeter Assembly (.2 - 4 LPM)
- Low-flow O2 Flowmeter Assembly (25cc – 1 LPM)
- O2 & N2O Large (H) Tank Regulator
- O2 & N2O Small E-Tank Yoke Assemblies (Single/Double)
- Wall Mount or Table Mount Assemblies



Custom Colors... *Let your Imagination run wild!*

Ideas for choosing colors:

- *Favorite School*
- *Favorite Sports Team*
- *Match Your Practice's Décor*
- *Identify each machine location*



Contact Us

Eagle Eye Anesthesia, Inc.
11233 St. Johns Industrial Parkway, Suite 1
Jacksonville, FL 32246
PH (904) 739-4721 Fax (904) 739-4729
Toll Free (800) 760-6976
www.EagleEyeAnesthesia.com