

The Big Picture

June 13, 2010

LongRun Capital Management

IMPORTANT DISCLOSURE

This presentation is for informational purposes only and should not be construed as investment advice or a recommendation to make any particular investment or implement any specific investment strategy. Data contained herein has been obtained from sources believed to be reliable. However, we cannot guarantee the accuracy of information obtained from third parties and we are not responsible for errors or omissions.

Big Picture Executive Summary

- **Equity markets around the world showed significant improvement last week as perceived risks of a European shutdown and Chinese slowdown appeared less threatening.**
- **On the other hand, the year-old improvement in credit markets has stalled with spreads widening over the past several weeks. A significant factor has been lower Treasury yields from a “flight to safety” away from the Euro. Any continued widening of investment grade and high yield corporate spreads would be a negative for the equity markets.**
- **Equity markets need further improvement in the short-term to get back above key trendlines. Lack of follow-through would be damaging to investor psychology and could lead to a deeper correction.**

Global Asset Classes as of June 11

As of 6/11/2010

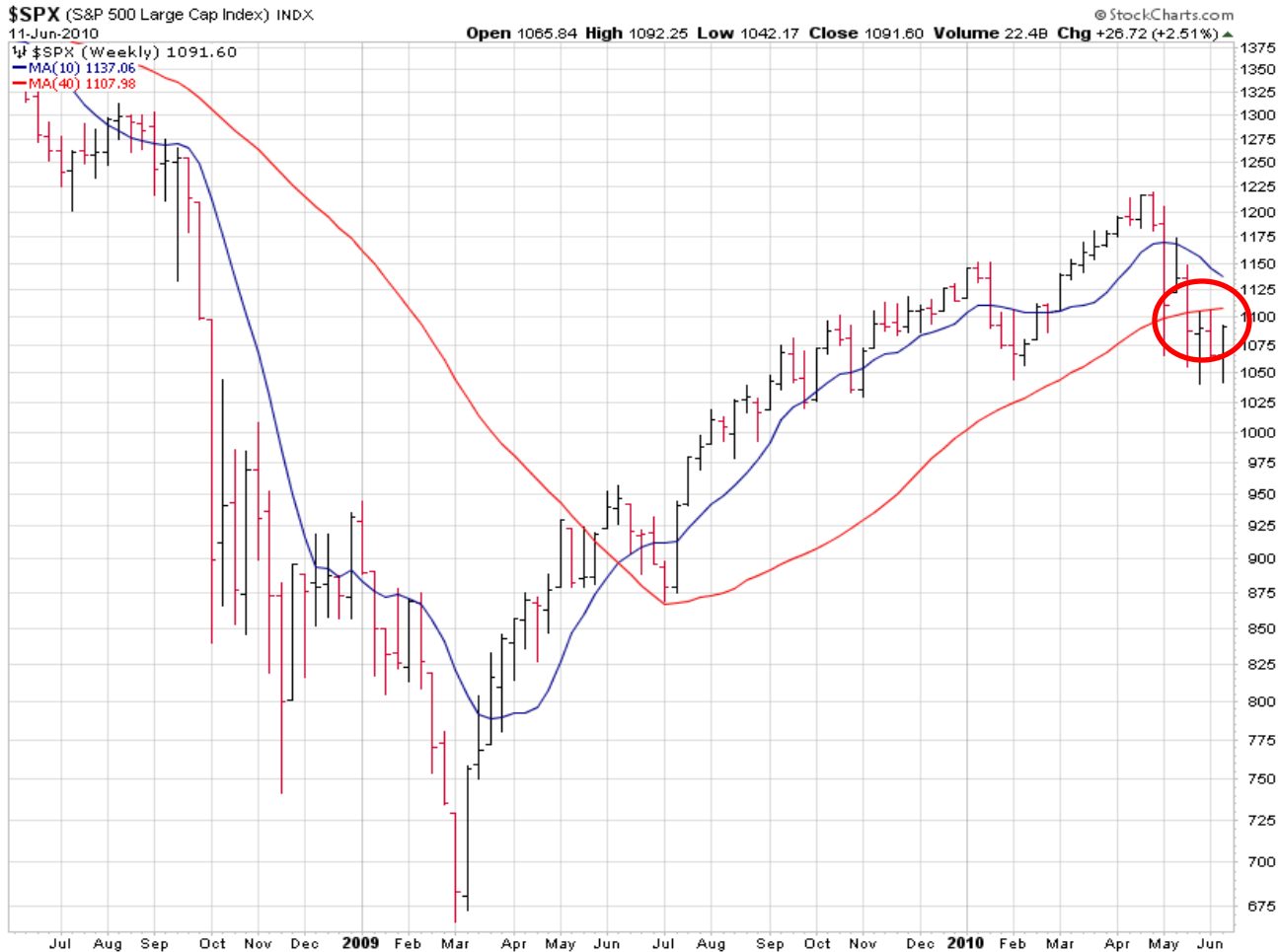
	Trailing Returns			Volatility		Moving Averages				
	5 Week	20 Week	40 Week	14 Day	65 Day	5/15/30	15/45/90	50	200	500
US Large Cap (S&P plus Sectors)										
SPY SPDR S&P 500 Index	-1.42% 2	-3.70% 2	7.39% 2	2.61 3	2.13 3	3	3	3	3	1
DIA Diamonds Trust (DJIA)	-1.42% 2	-4.53% 2	8.24% 2	2.19 3	1.71 3	3	3	3	3	1
QQQQ Powershares QQQ (NASDAQ)	0.20% 2	-2.34% 2	13.02% 2	1.17 1	0.98 1	3	3	3	1	1
US Mid Cap										
MDY iShares Russell 2000	0.26% 2	0.88% 2	15.45% 2	3.71 3	3.26 3	3	3	3	1	1
US Small Cap										
IWM iShares Russell 2000	-0.64% 2	0.14% 2	11.95% 2	2.08 3	1.73 3	3	3	3	1	1
US Microcap										
IWC iShares Russell Microcap	-2.08% 2	0.63% 2	9.00% 2	1.39 3	1.13 3	3	2	3	1	1
International Developed										
EFA iShares EAFE Index	-0.61% 2	-15.10% 3	-6.62% 2	1.41 3	1.16 1	3	3	3	3	3
GWX SPDR Int'l Small Cap	-0.24% 2	-8.88% 2	1.36% 2	0.64 1	0.89 3	2	3	3	3	1
Emerging Markets Equity										
EEM iShares Emerging Markets	1.49% 2	-9.44% 2	7.40% 2	1.18 1	1.00 1	2	3	3	3	1
EWX S&P Emerging Markets Small Cap	0.72% 2	-7.60% 2	13.44% 2	1.17 3	1.78 3	2	3	3	3	N/A
Natural Resource/Commodities										
IGE iShares S&P North American Nat Re	0.90% 2	-6.71% 2	10.28% 2	1.08 1	0.97 1	2	3	3	3	1
VAW Vanguard Materials	-1.11% 2	-8.33% 2	7.93% 2	2.00 3	1.68 3	3	3	3	3	1
VDE Vanguard Energy	-1.59% 2	-9.78% 2	5.06% 2	2.54 3	2.05 1	2	3	3	3	3
US Real Estate										
IYR iShares Dow Jones US Real Estate	1.94% 2	8.47% 2	27.93% 1	1.76 3	1.55 3	3	2	3	1	1
International Real Estate										
RWX SPDR Dow Jones Int'l Real Estate	0.31% 2	-10.13% 2	-2.36% 2	0.87 1	0.77 1	2	3	3	3	1
Emerging Markets Debt										
EMB iShares JPMorgan EM Bond Index	2.76% 2	-0.20% 2	5.84% 2	0.83 1	0.70 1	2	3	3	1	1
US Corporate Debt										
LQD iShares iBoxx Inv Grade Corp Bond	0.85% 2	0.45% 2	3.66% 2	0.56 1	0.59 1	2	2	1	1	1
High Yield Debt										
HYG iShares iBoxx High Yield Corporate	-0.26% 2	-5.32% 2	6.42% 2	1.08 1	1.00 1	3	3	3	3	1
US Treasuries										
SHY iShares Barclays 1-3 Yr Treasury	0.17% 2	0.46% 2	1.21% 2	0.11 1	0.11 1	1	1	1	1	1
TLT iShares Barclays 20+ Treasury	1.91% 2	6.18% 1	2.32% 2	1.39 3	1.18 3	1	1	1	1	1
Currencies										
UUP PowerShares DB US Dollar	3.08% 1	10.12% 1	8.94% 1	0.22 1	0.19 1	1	1	1	1	1
Metals										
GLD SPDR Gold Shares	1.47% 2	10.16% 2	29.34% 1	1.67 3	1.59 3	1	1	1	1	1

Global Asset Classes as of June 4

As of 6/4/2010

	Trailing Returns						Volatility				Moving Averages				
	5 Week	20 Week	40 Week		14 Day	65 Day			5/15/30	15/45/90	50	200	500		
US Large Cap (S&P plus Sectors)															
SPY	SPDR S&P 500 Index	-10.09%	3	-6.02%	2	7.95%	2	2.95	3	2.02	3	3	3	1	
DIA	Diamonds Trust (DJIA)	-9.68%	3	-6.31%	2	8.22%	2	2.45	3	1.62	1	3	3	1	
QQQQ	Powershares QQQ (NASDAQ)	-8.43%	3	-2.74%	2	15.85%	2	1.32	1	0.93	1	2	3	1	
US Mid Cap															
MDY	iShares Russell 2000	-10.23%	3	-1.73%	2	16.57%	1	4.29	3	3.09	3	2	3	1	
US Small Cap															
IWM	iShares Russell 2000	-11.29%	3	-1.09%	2	15.14%	2	2.37	3	1.65	1	3	2	1	
US Microcap															
IWC	iShares Russell Microcap	-12.52%	3	0.64%	2	13.68%	2	1.60	3	1.07	3	2	3	1	
International Developed															
EFA	iShares EAFE Index	-13.84%	3	-18.78%	3	-6.22%	2	1.58	3	1.12	1	3	3	3	
GWX	SPDR Int'l Small Cap	-13.49%	3	-12.10%	2	1.29%	2	0.75	3	0.87	3	3	3	1	
Emerging Markets Equity															
EEM	iShares Emerging Markets	-11.53%	3	-13.71%	2	6.96%	2	1.36	1	0.97	1	2	3	3	
EWX	S&P Emerging Markets Small Cap	-10.75%	3	-11.09%	2	13.11%	2	1.50	3	1.75	3	2	3	N/A	
Natural Resource/Commodities															
IGE	iShares S&P North American Nat Re	-12.41%	3	-12.56%	2	9.33%	2	1.23	1	0.93	1	3	3	3	
VAW	Vanguard Materials	-13.84%	3	-13.83%	3	5.86%	2	2.29	3	1.62	3	3	3	1	
VDE	Vanguard Energy	-14.17%	3	-14.62%	3	5.59%	2	2.76	3	1.95	1	3	3	3	
US Real Estate															
IYR	iShares Dow Jones US Real Estate	-10.84%	3	2.16%	2	26.77%	1	2.03	3	1.48	3	2	3	1	
International Real Estate															
RWX	SPDR Dow Jones Int'l Real Estate	-12.75%	3	-14.11%	2	-3.86%	2	0.97	1	0.75	1	3	3	3	
Emerging Markets Debt															
EMB	iShares JPMorgan EM Bond Index	-2.59%	2	-1.42%	2	6.69%	2	0.98	1	0.68	1	2	3	1	
US Corporate Debt															
LQD	iShares iBoxx Inv Grade Corp Bond	-1.59%	2	0.23%	2	4.30%	2	0.61	1	0.58	1	3	2	3	
High Yield Debt															
HYG	iShares iBoxx High Yield Corporate	-6.53%	3	-6.26%	2	6.49%	2	1.52	3	0.96	1	3	3	3	
US Treasuries															
SHY	iShares Barclays 1-3 Yr Treasury	0.41%	2	0.64%	2	1.27%	2	0.12	1	0.11	1	1	1	1	
TLT	iShares Barclays 20+ Treasury	6.14%	1	8.27%	1	4.33%	2	1.51	3	1.14	3	2	1	1	
Currencies															
UUP	PowerShares DB US Dollar	7.55%	1	13.42%	1	10.22%	1	0.26	3	0.18	1	1	1	1	
Metals															
GLD	SPDR Gold Shares	3.32%	2	7.87%	2	28.81%	1	1.74	3	1.56	3	1	1	1	

Big Picture: S&P 500 Trendlines



Many analysts and investors monitor the performance of market indices against trendlines of various lengths. One of the most watched is the 200 day moving average and its equivalent 40 week moving average. Breaking above or below this average is often viewed as the signal of a change in market direction.

The recent correction has put the S&P 500 below its 40 week and 200 day moving averages. Last week saw a strong move to regain this lost ground. Additional follow through is necessary to re-establish a positive trend.

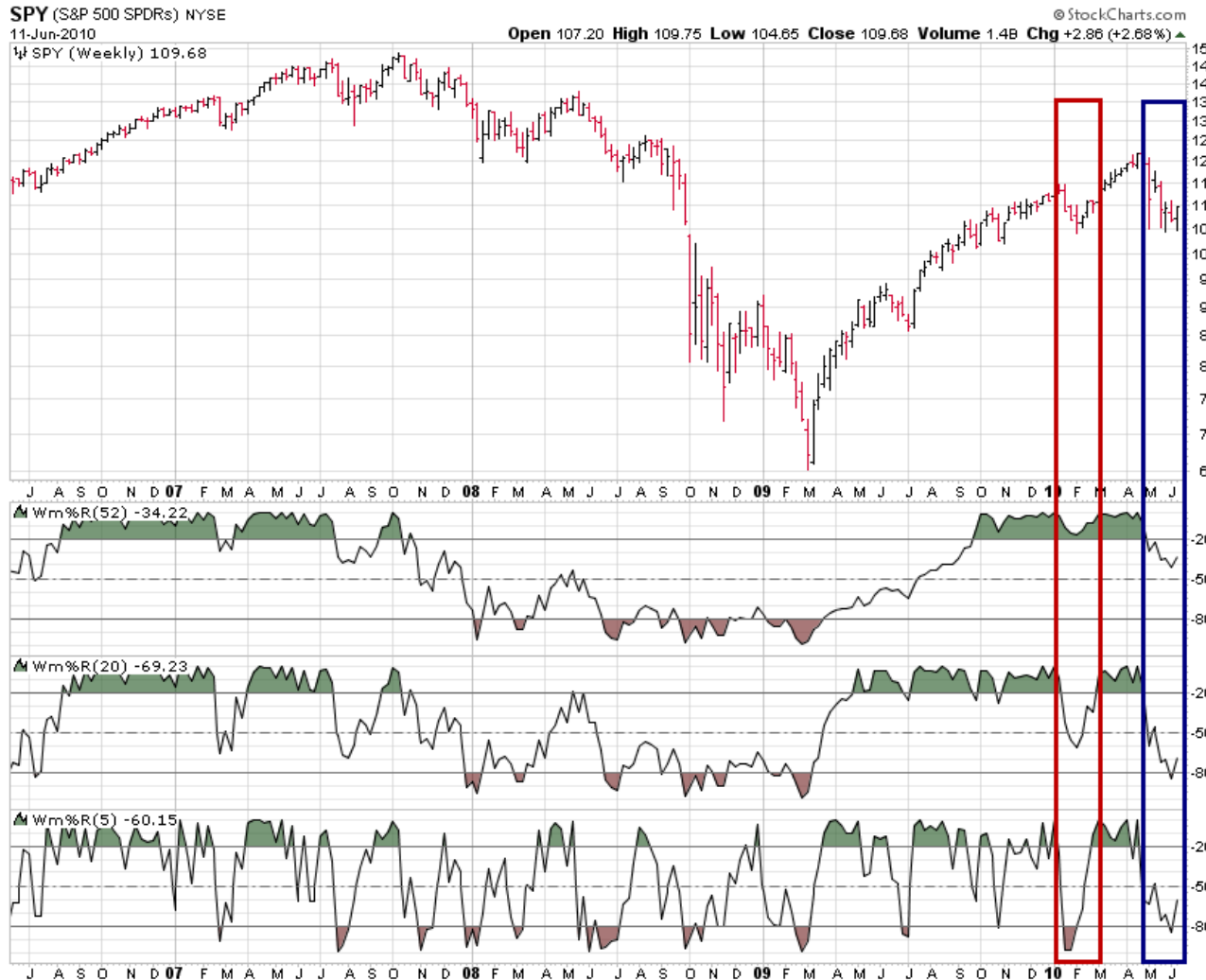
Big Picture: Schiller P/E Ratio



Robert Schiller of Yale University developed a measure of the price/earnings ratio of the S&P 500 stock index that uses earnings over a 10-year history to adjust for cyclical ups and downs.

Working from left to right, 1982 showed stocks to be undervalued on Schiller's measure and marked the start of a long bull market. Conversely, 2000 marked the peak of the Internet bubble with record high P/E ratios. The subsequent decline failed to reach the long-term average but the 2008 crash brought the market back below fair value. The current level indicates moderate overvaluation.

Big Picture: Overbought/Oversold



Measures whether a market is making new highs (overbought) or new lows (oversold) over three timeframes (5, 20 and 52 weeks). Overbought and oversold conditions can persist but rarely over all timeframes.

Comparing the recent downturn with February, the S&P 500 has reached levels more oversold for 52 week and 20 week measures. Last week saw a reversal. Continuation of that move is critical.

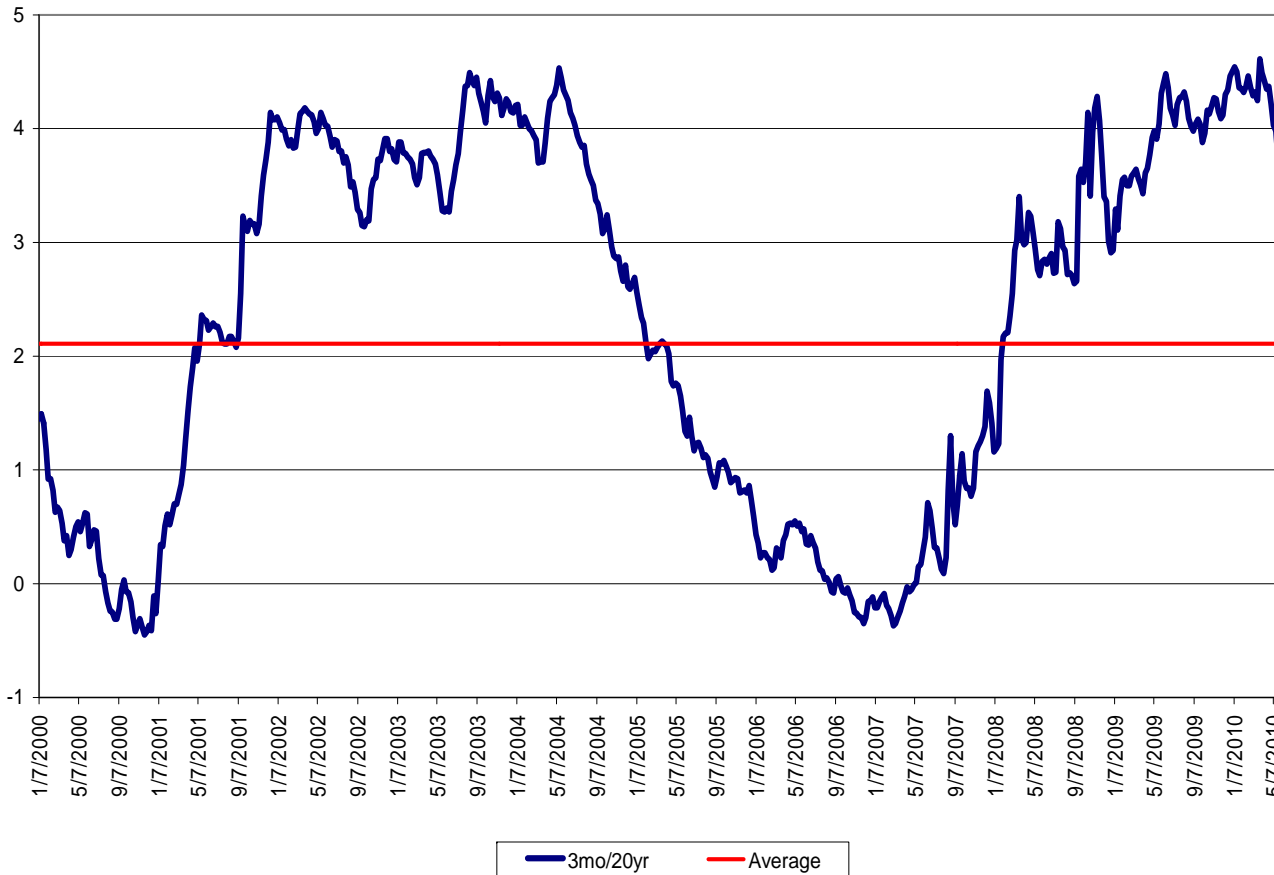
Big Picture: Volatility (Fear Gauge)



Measures the expected volatility of the US stock market based on put and call options. Higher volatility implies wider swings in stock prices and is used as a gauge of investor fear.

Volatility remains at elevated levels but saw a sharp drop last week as the market finished higher.

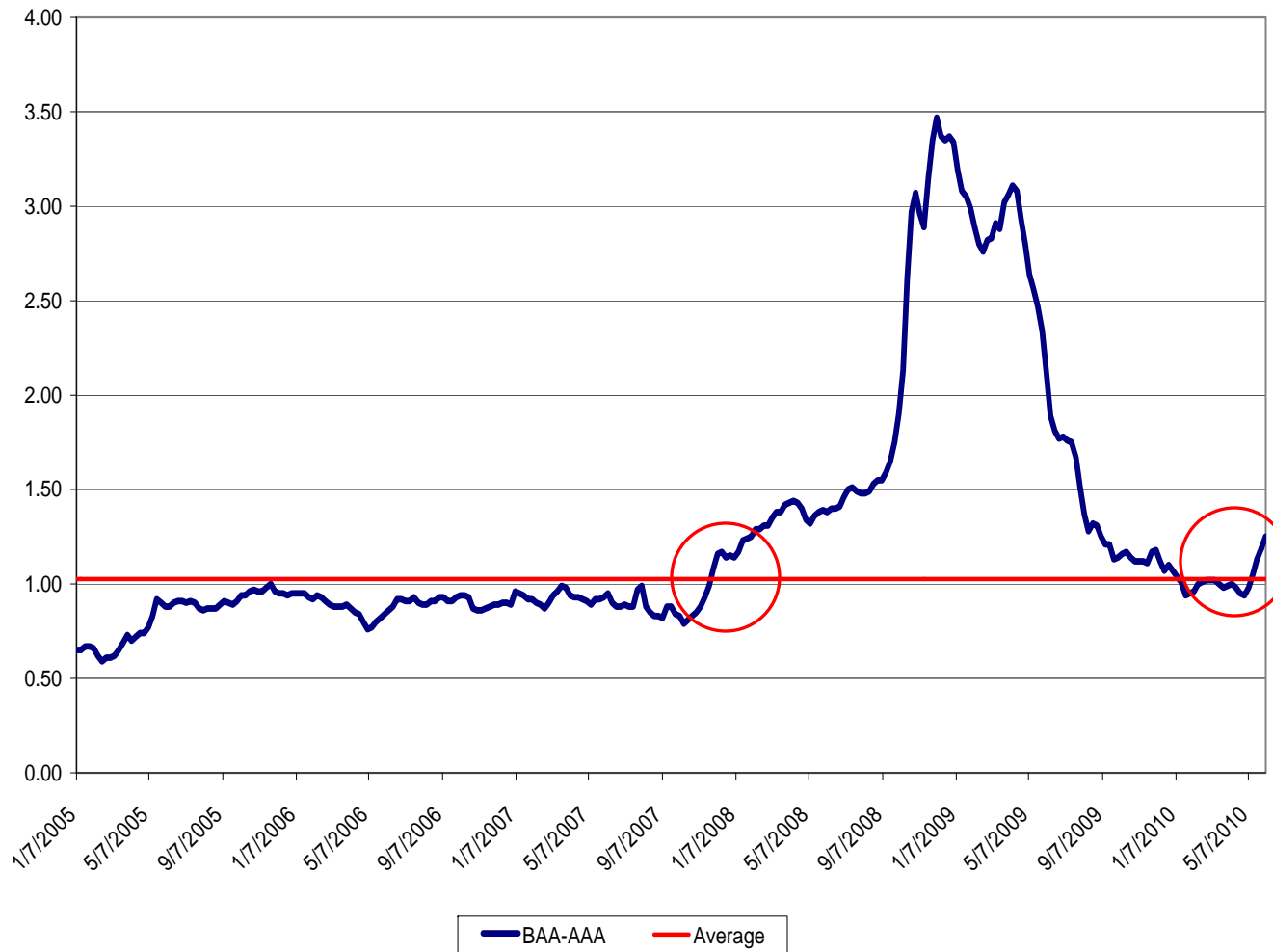
Big Picture: Treasury Yield Curve



Measures the difference between interest rates on 3-month Treasury Bills and 20-year Treasury Bonds. Spreads below zero (inverted yield curve) often precede recessionary periods. Wide spreads encourage lending to support economic growth.

Yield curve remains in a distinctly positive slope but has declined in recent weeks with significant buying of US Treasury securities as a "flight to safety" away from Europe and Japan (the two largest non-dollar currencies)

Big Picture: Moody's Quality Spread



Measures the difference between interest rates on moderate quality corporate bonds (BAA) and highest quality (AAA). Wide spreads indicate credit market risk aversion.

As Treasury yields have come down in recent weeks, corporate spreads have widened even though prices and yields on investment grade corporate bonds are essentially unchanged. Still, this trend is in the wrong direction and bears close attention.

Big Picture: High Yield Bond Spread



Measures the difference between interest rates on the Merrill Lynch High Yield Master Index and 10 year Treasuries. Wide spreads indicate credit market risk aversion.

As Treasury yields have come down in recent weeks, corporate spreads have widened and average bond prices have dropped in sympathy with the equity markets. As with higher quality corporate bonds, this trend is in the wrong direction and bears close attention.