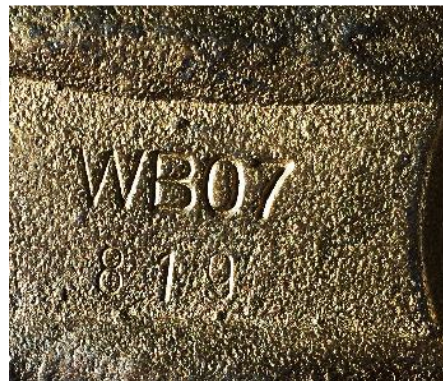


Title	Reid 7ELALE lifting clutches (NZ)		
Date:	12 August 2016	Reference:	7ELALE

ramsetreid™ have become aware that Reid™ 7ELALE lifting clutches with serial numbers **WB07783 to WB07840** may not meet our strict manufacturing specifications.



7ELALE Clutch



Serial number

Utilising our extensive records and unique serial numbers we have contacted all affected customers, both verbally and in writing, requesting that they cease using the lifting clutches as a precaution and to send them back to our Auckland office for inspection and testing. At the time of writing this product update, greater than 70% of the lifting clutches mentioned have been returned to our Auckland office. We envisage that we will have all of the remaining lifting clutches back to our office in the next week and we will start sending the re-tested lifting clutches back to the market as soon as possible.

We are also aware of another recent lifting clutch issue in New Zealand, from a batch that is different to range mentioned above. This affected lifting clutch will be analysed over the coming days to better understand the cause of the issue.

We would take this opportunity to highlight the importance of correct anchorage/lifting design, lifting clutch maintenance and use to prevent possible overloading and/or damage to the clutch. For further information or to organise a lifting training presentation from ramsetreid™, please contact us at sales@reids.co.nz

Regards

Jeff Stratford
Business Manager ANZ
Precast, Tilt-Up & Structural Steel