

LongRun Monthly Strategy Summary (3/31/2013)

Commentary

The first quarter finished on a positive note with both the Dow and the S&P 500 reaching new all-time highs. Including dividends, the S&P 500 was up 10.5% for the quarter. Even the botched bank bailout in Cyprus couldn't derail the rally. Diversification was a bad thing in Q1, with our Global Diversified benchmark dragging along at only 3%. For the month of March, the S&P 500 gained 3.8% versus 3.6% for our Aggressive Growth (up 5.4% for Q1) and 2.7% for Absolute Return (up 3.5% for Q1). Both of our strategies owned the two best performing ETFs on our list as US mid-cap and small-cap continued to outperform. Both strategies owned energy (XLE) that returned a respectable 2.5% for the month and Absolute Return owned Asia Pacific ex-Japan (EPP) that had a sub-par 0.1% return in March. Both portfolios are 100% "risk-on" for April and 100% US, with Absolute Return dropping EPP in favor of the S&P 500 (owned through commission-free IVV which is a clone of SPY). No change to Aggressive Growth.

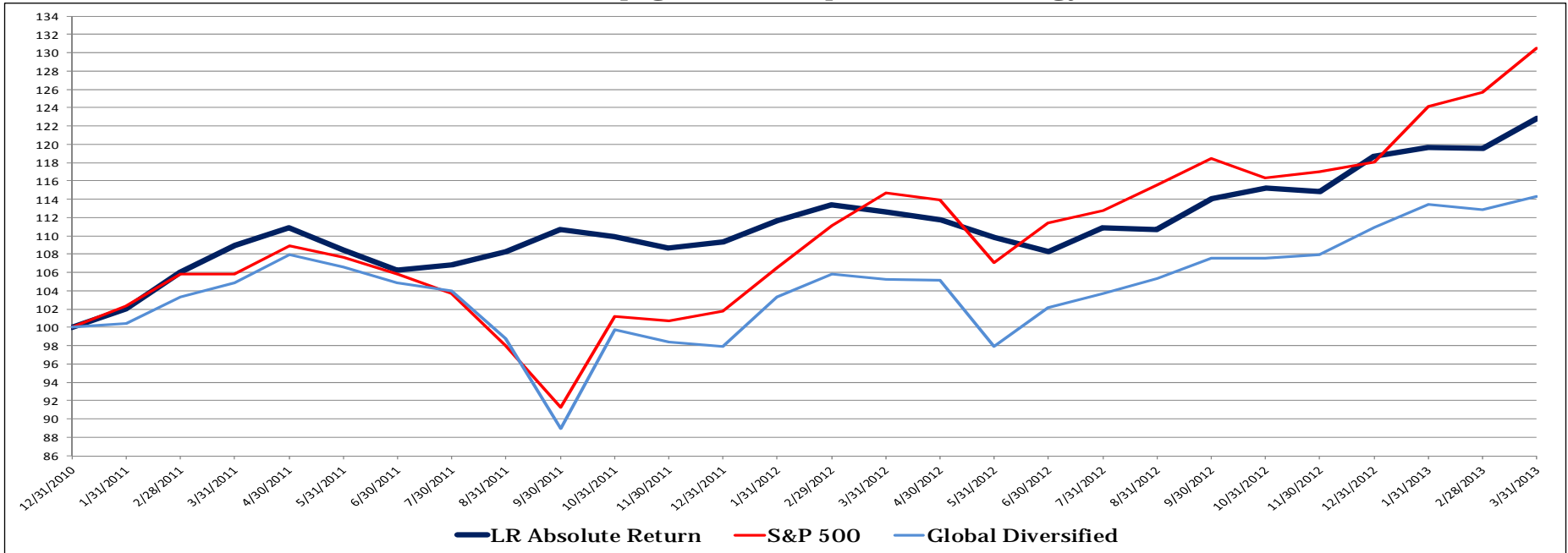
I may be the only one who finds it odd that the media is celebrating new all-time highs in the market as though investors are being enriched beyond their wildest dreams. The harsh reality is that with the S&P 500 at 1570 (the April 2 close), long-term, buy-and-hold investors are only recovering to the same place they were in October of 2007 (a closing high of 1565.16) and March of 2000 before that (closing high of 1527.46). If you goofed and bought the SPY in March 2000, your total return over 13 years and a few days (including dividends) would be about 43% - that's a compound average of 2.8% per year. As I show in a research piece that will be posted to the LongRun web site, even short-term Treasuries outperformed the stock market over that time period. A few years from now, we will be able to look back and judge whether the current all-time high is a marker on the road to much bigger returns or a caution sign that there may be some dangerous curves ahead. With our portfolios 100% "risk-on" we will participate in any additional upside the market may provide. We won't, however, be in the "buy and hope" crowd that needs a big bull run to make up for 13 years of lost time.

"The Edge...there is no honest way to explain it because the only people who really know where it is are the ones who have gone over." – Hunter S. Thompson

LongRun Monthly Strategy Summary (3/31/2013)

LongRun Absolute Return Strategy

See the last page for a description of this strategy.



2011 Returns (%)														
	Jan	Feb	Mar	Apr	May	Jun	Jul	Aug	Sep	Oct	Nov	Dec	YTD	Rel Perf
LR Absolute Return	2.0	4.0	2.7	1.8	-2.2	-2.1	0.5	1.4	2.3	-0.7	-1.1	0.6	9.3	
S&P 500 (SPY)	2.3	3.5	0.0	2.9	-1.1	-1.7	-2.0	-5.5	-6.9	10.9	-0.4	1.0	1.8	7.6
Global Diversified	0.4	2.9	1.5	2.9	-1.2	-1.6	-0.9	-5.0	-9.9	12.1	-1.4	-0.5	-2.1	11.4

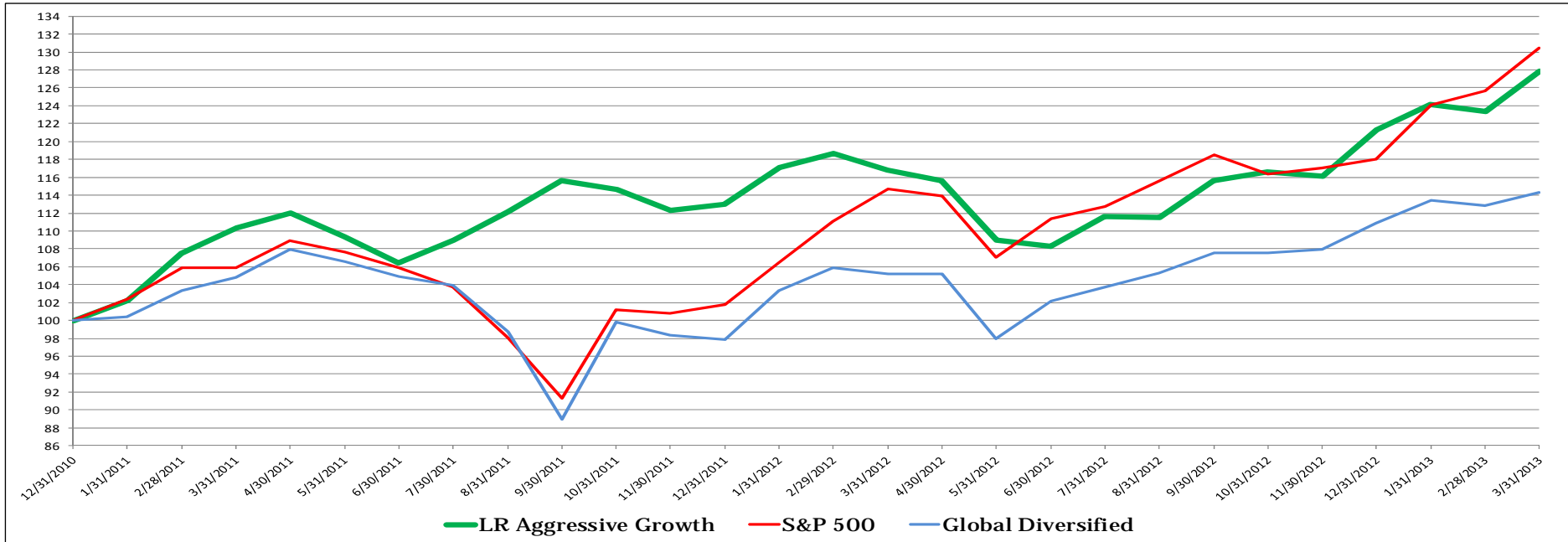
2012 Returns (%)														
	Jan	Feb	Mar	Apr	May	Jun	Jul	Aug	Sep	Oct	Nov	Dec	YTD	Rel
LR Absolute Return	2.1	1.6	-0.7	-0.8	-1.8	-1.4	2.4	-0.1	3.0	1.0	-0.4	3.4	8.6	Perf
S&P 500 (SPY)	4.6	4.3	3.2	-0.7	-6.0	4.1	1.2	2.5	2.5	-1.8	0.6	0.9	16.0	-7.4
Global Diversified	5.6	2.4	-0.6	-0.1	-6.8	4.3	1.5	1.5	2.1	0.0	0.3	2.8	13.3	-4.7

2013 Returns (%)															From Inception 1-Jan-2011	
	Jan	Feb	Mar	Apr	May	Jun	Jul	Aug	Sep	Oct	Nov	Dec	YTD	Rel Perf	Rtn	Rel Perf
LR Absolute Return	0.8	-0.1	2.7										3.5	Perf	19.6	Perf
S&P 500 (SPY)	5.1	1.3	3.8										10.5	-7.0	25.7	-6.1
Global Diversified	2.3	-0.6	1.3										3.0	0.5	12.8	6.8

LongRun Monthly Strategy Summary (3/31/2013)

LongRun Aggressive Growth Strategy

See the last page for a description of this strategy.



	2011 Returns (%)													YTD	Rel Perf
	Jan	Feb	Mar	Apr	May	Jun	Jul	Aug	Sep	Oct	Nov	Dec			
LR Aggressive Growth	2.2	5.2	2.6	1.6	-2.4	-2.8	2.4	2.9	3.2	-0.9	-2.0	0.6	13.0		
S&P 500 (SPY)	2.3	3.5	0.0	2.9	-1.1	-1.7	-2.0	-5.5	-6.9	10.9	-0.4	1.0	1.8	11.2	
Global Diversified ¹	0.4	2.9	1.5	2.9	-1.2	-1.6	-0.9	-5.0	-9.9	12.1	-1.4	-0.5	-2.1	15.1	

	2012 Returns (%)													YTD	Rel
	Jan	Feb	Mar	Apr	May	Jun	Jul	Aug	Sep	Oct	Nov	Dec			
LR Aggressive Growth	3.7	1.3	-1.6	-1.0	-5.7	-0.6	3.1	-0.1	3.7	0.8	-0.4	4.4	7.3	Perf	
S&P 500 (SPY)	4.6	4.3	3.2	-0.7	-6.0	4.1	1.2	2.5	2.5	-1.8	0.6	0.9	16.0	-8.6	
Global Diversified ¹	5.6	2.4	-0.6	-0.1	-6.8	4.3	1.5	1.5	2.1	0.0	0.3	2.8	13.3	-6.0	

	2013 Returns (%)													From Inception 1-Jan-2011		
	Jan	Feb	Mar	Apr	May	Jun	Jul	Aug	Sep	Oct	Nov	Dec	YTD	Rel Perf	Rtn	Rel
LR Aggressive Growth	2.4	-0.6	3.6										5.4	Perf	23.4	Perf
S&P 500 (SPY)	5.1	1.3	3.8										10.5	-5.1	25.7	-2.3
Global Diversified ¹	2.3	-0.6	1.3										3.0	2.4	12.8	10.6

LongRun Monthly Strategy Summary (3/31/2013)

2012 Target Asset Returns and Dispersion

Target Asset	ETF	Jan	Feb	Mar	Apr	May	Jun	Jul	Aug	Sep	Oct	Nov	Dec	YTD
US Large Cap	SPY	4.6	4.3	3.2	-0.7	-6.0	4.1	1.2	2.5	2.5	-1.8	0.6	0.9	16.0
US Mid Cap	MDY	6.6	4.5	1.9	-0.3	-6.5	1.9	0.0	3.5	1.7	-0.9	2.3	2.3	17.8
US Small Cap	IWM	7.2	2.6	2.5	-1.6	-6.6	5.1	-1.5	3.5	3.3	-2.2	0.6	3.6	16.7
AsiaPac ex Japan	EPP	10.2	3.3	-1.7	1.3	-11.8	7.0	5.1	1.3	2.8	2.5	1.8	3.8	26.7
Europe	VGK	5.5	5.4	0.1	-2.5	-12.0	8.3	0.3	4.7	2.9	1.8	2.5	4.3	21.6
Latin America	ILF	9.1	4.7	-2.0	-4.0	-12.2	4.8	1.4	-1.1	2.4	-0.6	-1.6	6.5	5.8
Emerging Markets	EEM	11.0	5.3	-3.1	-1.7	-10.7	5.1	0.0	0.4	5.2	-0.4	1.5	6.8	19.1
US Real Estate	VNQ	6.4	-1.2	5.2	2.9	-4.5	5.5	2.0	0.0	-1.9	-0.9	-0.3	3.7	17.6
Energy	XLE	2.3	5.9	-3.8	-0.7	-10.7	4.8	4.9	2.7	3.1	-2.0	-1.2	1.0	5.2
Metals/Mining	XME	10.7	-4.4	-3.8	-2.6	-18.7	5.6	-3.9	2.9	6.6	2.3	-4.7	6.9	-6.6
Inv Grade Corp Bonds	LQD	2.1	1.6	-1.4	1.1	0.8	0.9	3.5	-0.1	1.1	1.4	-0.4	-0.3	10.6
High Yield Bonds	HYG	1.5	2.1	-1.0	1.1	-3.2	4.7	1.0	1.2	0.5	0.9	1.1	1.4	11.7
Emerging Mkts Bonds	EMB	1.1	2.5	-0.1	1.8	-2.8	4.1	3.7	1.2	1.8	0.6	1.2	0.7	16.9
20+ Yr Treasuries	TLT	-0.3	-2.6	-4.2	4.8	9.0	-1.7	3.8	-1.3	-2.5	-0.5	1.4	-2.5	2.6
Dispersion (best-worst)		11.3	10.4	9.4	8.8	27.7	10.0	9.0	6.0	9.2	4.7	7.2	9.4	33.2
Absolute Return Strategy Holdings		CASH	VNQ	ILF	MDY	CASH	TLT	CASH	TLT	EPP	XLE	XME	VGK	
		VNQ	IWM	EEM	CASH	VNQ	CASH	VNQ	LQD	VGK	EPP	EPP	EPP	
		IWM	MDY	MDY	SPY	CASH	LQD	EMB	EMB	XLE	VGK	VGK	EEM	
		CASH	SPY	IWM	IWM	EMB	CASH	LQD	VNQ	EMB	EMB	CASH	CASH	
Aggressive Growth Strategy Holdings		XLE	VNQ	ILF	MDY	SPY	TLT	TLT	TLT	EPP	XLE	XME	VGK	
		VNQ	IWM	EEM	EEM	VNQ	VNQ	VNQ	LQD	VGK	EPP	EPP	EPP	
		IWM	MDY	MDY	SPY	MDY	LQD	EMB	EMB	XLE	VGK	VGK	EEM	

2013 Target Asset Returns and Dispersion

Target Asset	ETF	Jan	Feb	Mar	Apr	May	Jun	Jul	Aug	Sep	Oct	Nov	Dec	YTD
US Large Cap	SPY	5.1	1.3	3.8										10.5
US Mid Cap	MDY	7.1	0.9	4.8										13.2
US Small Cap	IWM	6.2	1.0	4.7										12.3
AsiaPac ex Japan	EPP	3.5	1.8	0.1										5.4
Europe	VGK	4.3	-3.4	0.3										1.1
Latin America	ILF	3.8	-4.7	0.7										-0.4
Emerging Markets	EEM	-0.3	-2.3	-1.0										-3.6
US Real Estate	VNQ	3.7	1.2	2.9										8.0
Energy	XLE	8.3	0.4	2.5										11.5
Metals/Mining	XME	-2.8	-7.6	-0.2										-10.3
Inv Grade Corp Bonds	LQD	-1.3	1.1	-0.1										-0.3
High Yield Bonds	HYG	0.3	0.9	0.9										2.2
Emerging Mkts Bonds	EMB	-2.9	0.3	-0.9										-3.5
20+ Yr Treasuries	TLT	-3.2	1.2	-0.4										-2.4
Dispersion (best-worst)		11.5	9.3	5.9										23.5
Absolute Return Strategy Holdings		VGK	MDY	IWM	MDY									
		EPP	VGK	MDY	IWM									
		EEM	IWM	XLE	XLE									
		XME	EPP	EPP	SPY									
Aggressive Growth Strategy Holdings		VGK	MDY	IWM	IWM									
		EPP	VGK	MDY	MDY									
		EEM	IWM	XLE	XLE									

LongRun Monthly Strategy Summary (3/31/2013)

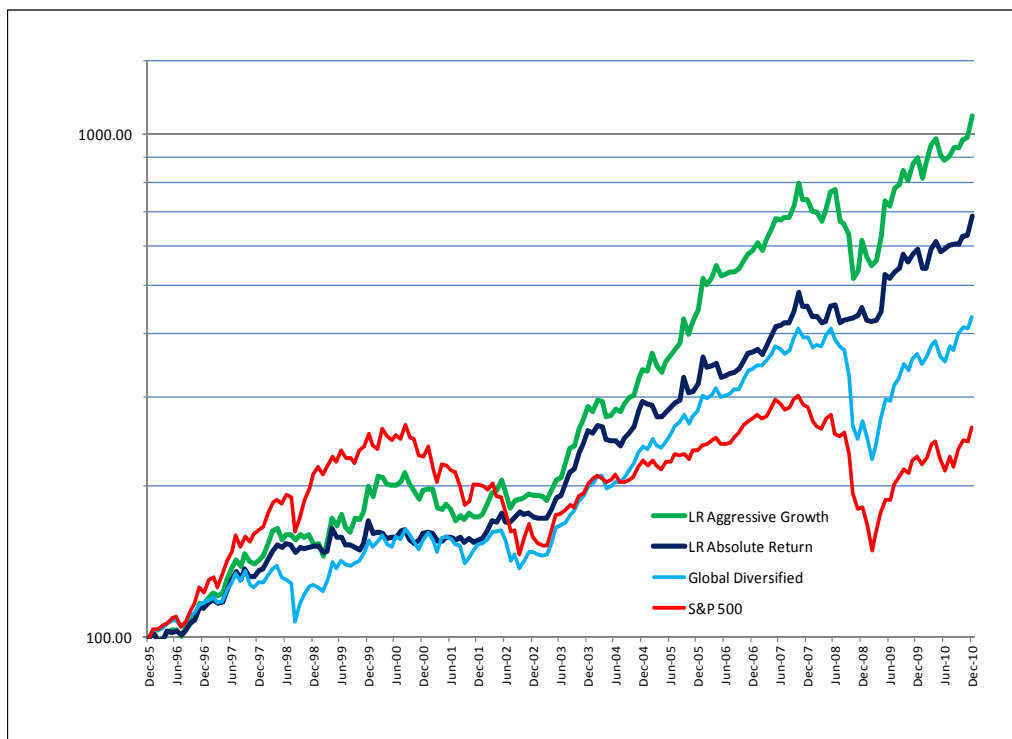
LongRun Capital Management LLC

LongRun Capital Management LLC is an independent registered investment advisor founded in 2003 to provide investment management services to individuals, families, trusts and charitable entities. Our focus is the active management of investment portfolios to achieve a balance of return, risk and tax-efficiency that meets each client's specific objectives. The Absolute Return and Aggressive Growth strategies are part of a broader array of investment solutions that we make available to our clients depending upon their objectives and risk tolerance. All assets under management are held in separate accounts owned directly by our clients. Our Managing Partner, Jim Carroll, has more than 20 years of financial advisory and investment experience.

Investment Structure:	Separately Managed Accounts
Custodian:	Fidelity Investments
Minimum Investment:	\$1,000,000 (subject to waiver)
Lock-up:	None
Liquidity/Redemption:	Upon client request
Management fee:	1% of first \$5 million; .75% of assets above \$5 million
Disclosure:	Form ADV available upon request

Backtest of LongRun Risk-Managed Strategies

The results shown below represent a backtest of the LongRun Aggressive Growth and Absolute Return strategies from January 1, 1996 through December 31, 2010. Additional information is available upon request. Please review the important disclosures below and on the next page.



	S&P 500 (SPY)	Global Diversified ¹	Aggressive Growth ²	Absolute Return ³
Compound Annual Return ⁴	6.6%	10.3%	17.2%	13.7%
Ending Value per \$1 ⁵	\$2.62	\$4.34	\$10.84	\$6.84
Multiple of S&P 500	NA	1.7	4.1	2.6
Standard Deviation ⁶	16%	15%	18%	13%
Maximum Drawdown ⁷	-51%	-45%	-35%	-13%
Overall Correlation ⁸	100%	85%	56%	46%
Up Market Correlation ⁹	100%	84%	56%	53%
Down Market Correlation ⁹	100%	88%	47%	21%
Up Capture ¹⁰	100%	90%	107%	74%
Down Capture ¹⁰	100%	76%	59%	37%
Up/Down Ratio ¹¹	1.0	1.2	1.8	2.0
Percent Positive Ratio ¹²	62%	86%	91%	94%
Positive Monthly Returns	60%	64%	64%	68%
Batting Average ¹³	NA	58%	60%	56%

1. Global Diversified is a benchmark that equally weights the 14 ETFs used in the risk-managed strategies, resulting in a global portfolio that is a 70/30 mix of equity and fixed income
2. Aggressive Growth is a risk-managed strategy designed to achieve higher long-term returns for clients able to tolerate a significant amount of risk
3. Absolute Return is a risk-managed strategy designed to strictly limit investment risk while producing attractive expected returns
4. Annualized compound return from January 1, 1996 through December 31, 2010
5. The estimated value of \$1 invested on January 1, 1996 through December 31, 2010
6. Standard deviation is a statistical measure of the dispersion of investment returns around the average return; a higher standard deviation is commonly viewed as indicative of greater risk
7. Drawdown is a measure of the worst peak to trough decline in portfolio value over a measured period; a higher drawdown is indicative of greater risk
8. Correlation measures the degree to which one set of returns moves up and down in sync with a benchmark set of returns; the S&P 500 is used as the benchmark for this analysis
9. Upmarket correlation analyzes only periods when benchmark returns are positive; downmarket vice versa; upmarket correlation higher than downmarket correlation indicates better risk-adjusted returns
10. Up capture measures the degree to which an investment matches benchmark returns in an upmarket and vice versa for down capture
11. An Up/Down Ratio greater than 1 indicates risk-adjusted outperformance versus the benchmark; a ratio of 2 or more indicates significant risk-adjusted outperformance
12. Percent Positive Ratio measures the percentage of all holding periods from six months to five years that produced positive returns
13. Batting average measures the percentage of months that the particular investment outperformed the benchmark (S&P 500)

Important Disclosures Regarding LongRun Capital Risk-Managed Strategies

- Strategies:** Absolute Return and Aggressive Growth (the “Strategies”) are disciplined, rules-based tactical allocation strategies developed by LongRun Capital based on a quantitative methodology known as relative strength. Relative strength involves ranking a selected universe of potential investments based on recent rate of return and then allocating a portfolio to a subset of investments at the top of the performance ranking. The Strategies use a universe of 14 exchange-traded funds (ETFs). These 14 ETFs are ranked on 3-month total return. Absolute Return will hold the top 4 of the 14 ETFs unless one or more of those top 4 has a negative 3-month or 1-month return, in which case that allocation will be held in a cash-equivalent money market fund. This defensive rule may cause Absolute Return to be 100% in cash under adverse market conditions. Aggressive Growth will always hold the top 3 of the 14 ETFs. Holdings for each strategy are reviewed monthly based on 3-month relative strength rankings using month-end performance data. Any changes to the Strategies based on revised rankings are implemented on the first trading day of each month.
- ETF universe:** The 14 ETFs that serve as the selection menu for the Strategies were selected as representative of the global equity and fixed income asset classes that would commonly be used to construct a prudently diversified portfolio. These 14 ETFs will be held constant unless one or more cease trading in the future, in which case we will seek to use a reasonable substitute representing the same asset class. In addition, we may occasionally substitute an equivalent ETF as part of a tax loss harvesting strategy or to reduce transaction expenses. Clients will incur direct expenses associated with the purchase and sale of ETFs as well as the indirect expenses associated with management of the ETFs by their sponsors (e.g. iShares).
- Global Diversified Benchmark:** The S&P 500 is a benchmark commonly used as a proxy for the US equity market. As an alternative, we developed the Global Diversified benchmark to measure the performance of a portfolio that includes all 14 of the ETFs used in the models underlying each of the Strategies. The Global Diversified Benchmark assigns an equal weighting to each of the asset classes represented by the 14 ETFs and rebalances those weightings each month. The resulting portfolio is approximately 70% equity and 30% fixed income with approximately 40% allocated to US equities and 30% allocated to international equities.
- Backtest:** LongRun Capital constructed a backtest of the Strategies using a combination of the 14 ETF universe and mutual funds representing the same asset classes for time periods prior to the inception of the ETFs currently being used. The rule-sets used to determine the month-to-month holdings of the Strategies were applied consistently for the entire backtest period. As a result, there was no manager discretion involved in portfolio management. Backtest returns reflect the deduction of a 1% per annum management fee and an expense ratio of 0.15% per annum designed to approximate the transaction expenses associated with implementation of the Strategies. Underlying data has been obtained from sources believed to be reliable and we are not responsible for errors or omissions. The results achieved in actual accounts may vary from those that would be indicated from backtest results. Backtest performance of the strategies provides no guarantee of future results.
- Composite Results:** LongRun Capital is an independent investment advisory firm that manages assets on a discretionary basis. Clients may elect to have their assets managed on a customized basis and may utilize the Strategies for some or all of their assets managed by LongRun Capital. Unaudited composites for each of the Strategies were started on January 1, 2011, representing the performance of actual accounts assigned to the Strategies. Composites include those accounts with a value of at least \$250,000 fully invested in one of the Strategies. Composite returns are presented net of investment management fees and transaction expenses. LongRun Capital’s top management fee tier is 1% per annum. Internal fees and expenses associated with the ETFs are reflected in the price of each ETF. Dividends, income and capital gains are reinvested on a monthly basis when allocation changes are made. Past performance is no guarantee of future results. Information regarding LongRun Capital’s management fees and the value of assets included in the composite results is available upon request. In addition, LongRun Capital’s disclosure document, Form ADV Part 2A, is available online at www.adviserinfo.sec.gov or upon request.