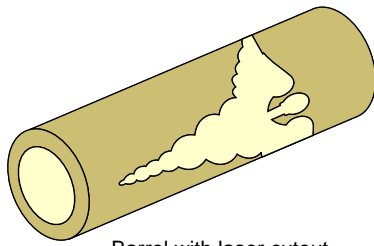


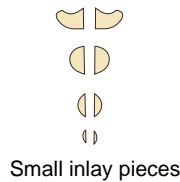
# Medicine Symbol Inlay Kit Instructions

## Kit components

- 1: 1 x Stabilized Barrel with laser cutout
- 2: 1 x Stabilized Holly Wood Medicine Symbol laser Inlay  
Inlay will come in three pieces.
- 3: 6 x Small inlay pieces - Same color as Barrel



Barrel with laser cutout



Small inlay pieces



Medicine Symbol laser Inlay

## Step 1:

Remove all components from the plastic bag and place on a clean work surface. Please note that the components are small and you can lose them quite easily. The parts are also fragile and should be handled with care.

## Step 2:

Take the barrel with the laser cutout and slide the brass tube(27/64) into it. **Please do not use any glue** at this stage, this is only to assist you with the assembly process.

## Step 3:

Take the Medicine inlay break it into three pieces if not already in three pieces. The pieces are very fragile so please be careful when breaking it apart. See [Illustration Nr 1](#). Now start pressing the pieces into their corresponding openings in the order that they are numbered in [Illustration Nr 1](#). Once all the parts are in place you can use a small piece of wood/penblank to push it completely into position. If the serpent's head breaks off just put it back into its corresponding opening.

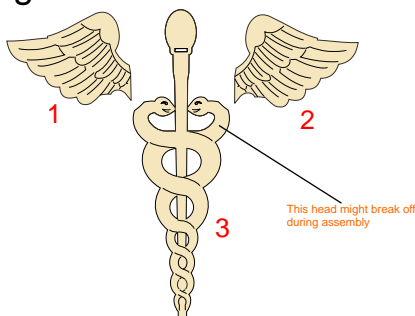
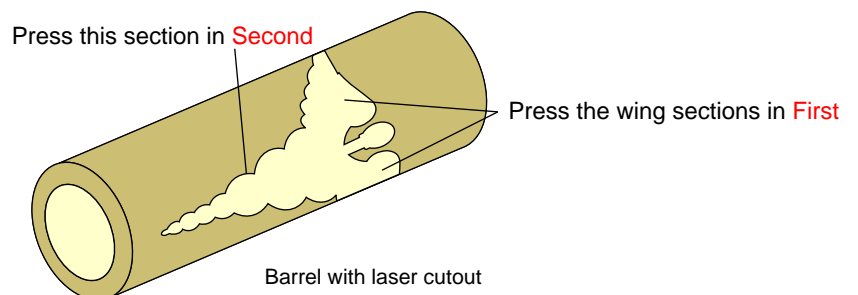


Illustration Nr 1

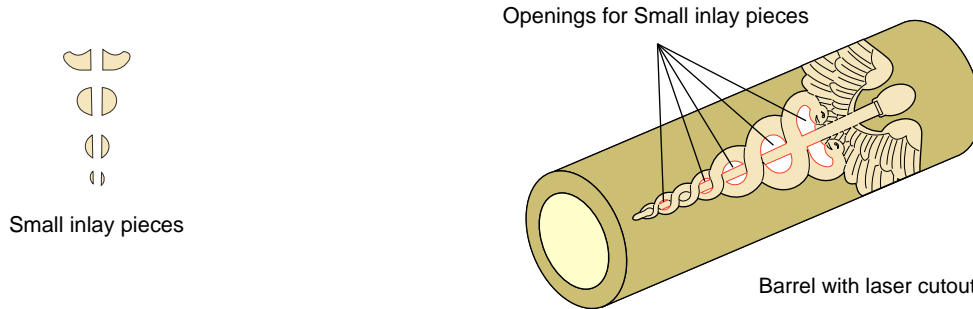


Barrel with laser cutout

Please do all of the assembly on a clean sheet of paper so if something drops that you would not lose it.

## Step 4:

Place all of the small inlay pieces into there corresponding openings. Some of these pieces are very tiny, **DO NOT RUSH and LOOSE THEM!**



## Step 5:

After all the inlay pieces are in place **REMOVE THE BRASS TUBE** from the barrel and then use small amounts of thin CA glue to secure all the pieces into place. Please **do not** soak the whole inlay with thin CA, try to keep the glue to the outer edges of each inlay piece and not in the laser detail lines which will be filled with black dust while turning and finishing the pen.

## Step 6:

Cut the barrel to length but **do not use a Barrel trimmer** it will destroy/break the barrel and all your hard work. Use a disk sander or any other method that will not destroy your blank. Now you can glue the brass tube into place with a glue of your choice and let it dry completely before turning the blank.

It is important to sand the barrel smooth before you are going to use a skew or any other turning tools.

After the barrel is sanded smooth blow the sanding dust out of the laser detail lines and rub some black/dark wood dust into those detail lines. Use thin Ca glue over the whole inlay to secure all pieces into place before turning the barrel to size.

While turning the barrel to size you will notice that some of the laser detail lines will need some more dust filling just repeat filling it with dust and cover with thin CA and continue turning.

Good luck and if you have any questions please do not hesitate to contact me by email or phone. [info@lazerinez.com](mailto:info@lazerinez.com) Tel: 770 891 12301