

Addendum

No. TWO Date: 3.6.19

Project:

A New Addition to the
Clanton Middle School Gymnasium for the
Chilton County Board of Education
Clanton, Alabama

McKee Project No. 14-108

A2.1 GENERAL MODIFICATIONS:

The following changes and/or substitutions to the plans and specifications are hereby made a part of same and are incorporated in full force as part of the contract.

Bidders shall acknowledge receipt of this Addendum in writing on his Proposal Form.

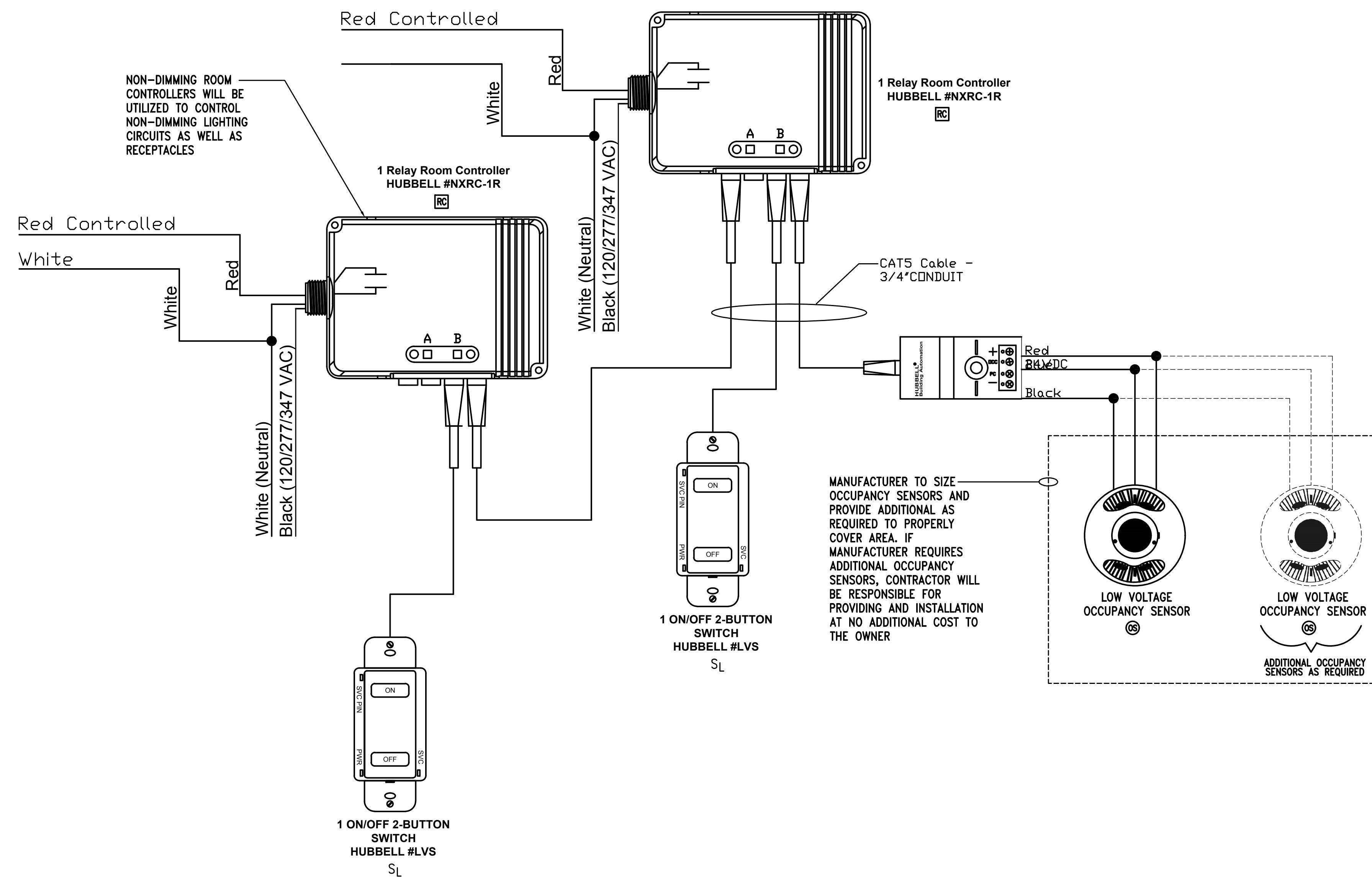
A2.2 SPECIFICATION MODIFICATIONS: NONE

A2.3 DRAWING MODIFICATIONS:

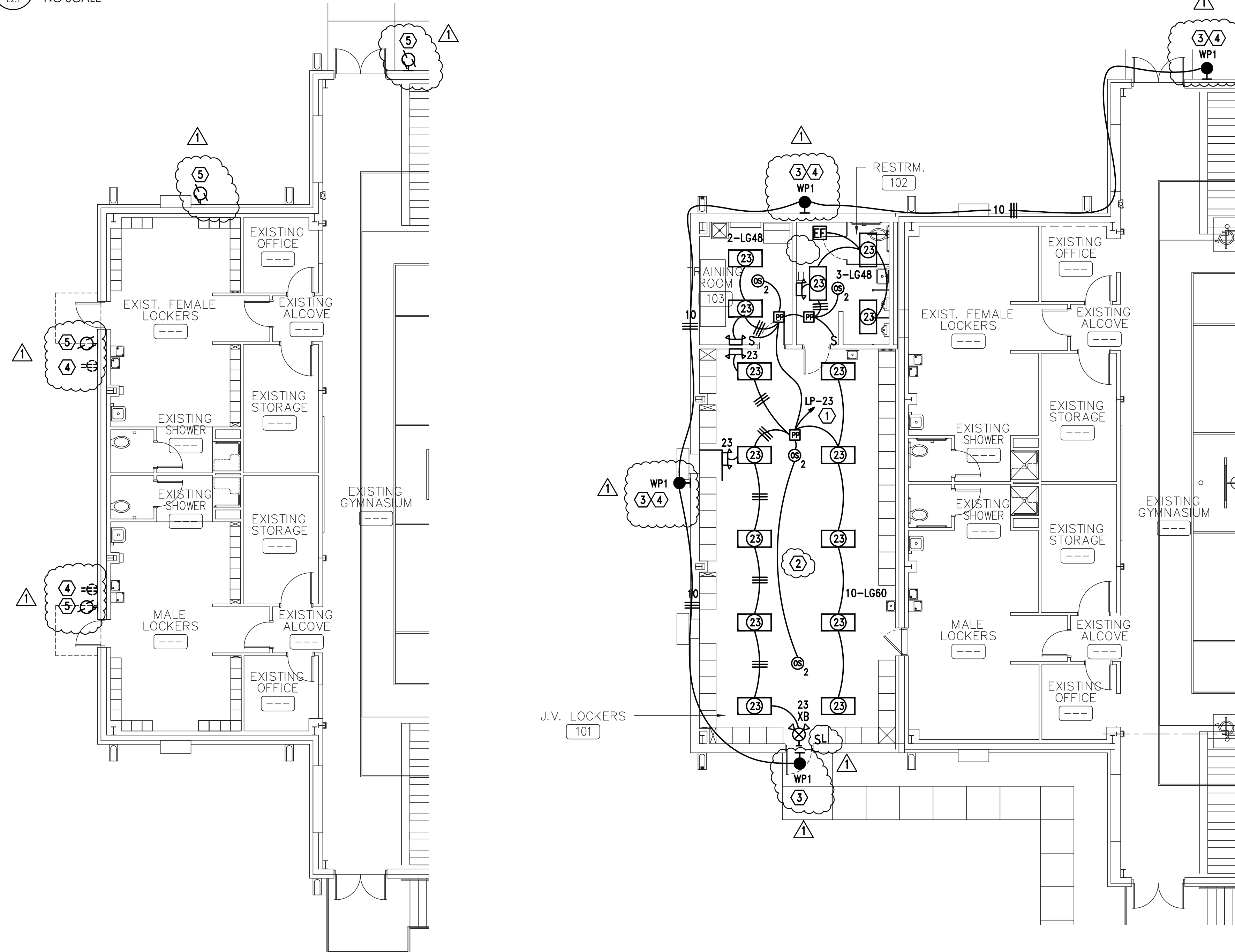
See the attached Revised Drawings as follows:

Sheet E2.1 (dated 3.06.19)

END OF ADDENDUM TWO



2 TYPICAL MULTIPLE OCCUPANCY SENSOR AND LOW VOLTAGE SWITCH CONTROLLER DETAIL
NO SCALE



1 PARTIAL FLOOR PLAN ELECTRICAL - DEMOLITION
SCALE: 1/8"=1'-0"

2 PARTIAL FLOOR PLAN - LIGHTING
SCALE: 1/8"=1'-0"

ROOM CONTROLLER NOTES:

- CONTRACTOR SHALL LOCATE ALL ROOM CONTROLLERS ABOVE DOORS IN EACH ROOM 6" ABOVE CEILING GRID. PROVIDE ACCESS PANELS WHERE LOCATED ABOVE HARD CEILINGS OR MOUNT IN UTILITY TYPE ROOMS WHENEVER POSSIBLE. ROOM CONTROLLERS SHOWN ON THIS PLAN IS DIAGRAMATIC FOR CIRCUITRY. DO NOT USE THESE FOR ACTUAL LOCATIONS. PROVIDE A WHITE PHENOLIC LABEL WITH 1" BLACK TEXT THAT READS "RC" GLUED ON CEILING GRID UNDER POWER PACK FOR EACH LOCATION FOR FUTURE MAINTENANCE.

PHOTOCONTROL OF LIGHTING:

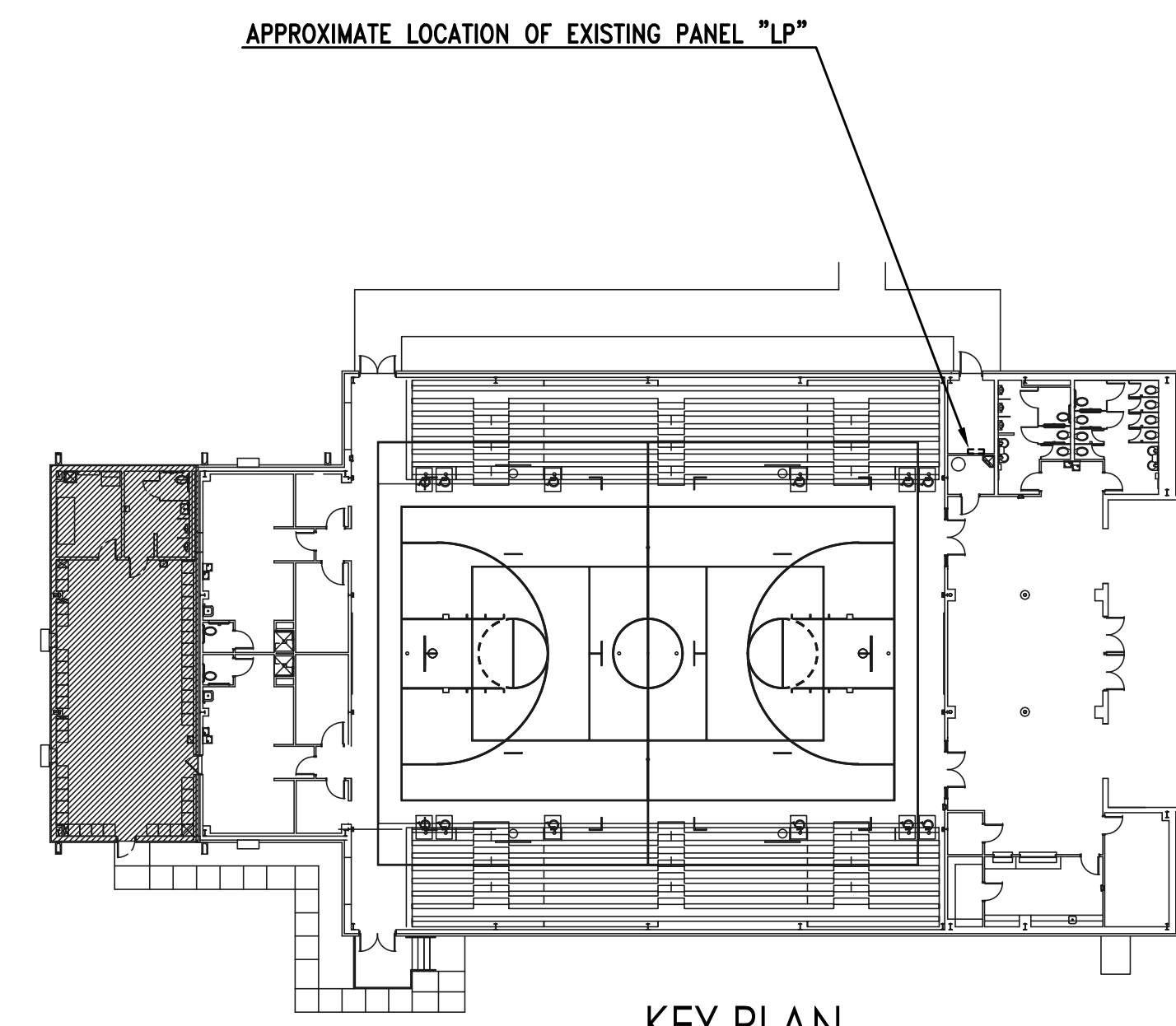
- PHOTOCONTROL OF LIGHT FIXTURES WILL NOT BE REQUIRED FOR THE AREAS ON THIS PAGE. THE PRIMARY SIDELIGHTED AREA WILL NOT HAVE WATTAGES EXCEEDING 150W.

GENERAL NOTES:

- OCCUPANCY SENSORS SHALL BE VACANCY TYPE WITH DUAL TECHNOLOGY DETECTION AND 20-MINUTE CUTOFF TIME.
- OCCUPANCY SENSOR MANUFACTURER PROVIDER WILL BE RESPONSIBLE FOR SIZING THE OCCUPANCY SENSORS IN EACH SPACE. PROVIDE THIS SIZING TO THE ENGINEER DURING SUBMITTAL PHASE FOR APPROVAL. PROVIDE ADDITIONAL OCCUPANCY SENSORS AS REQUIRED TO FULLY COVER ALL SPACES. IF ADDITIONAL OCCUPANCY SENSORS OR ANY OTHER EQUIPMENT IS REQUIRED IT WILL BE THE RESPONSIBILITY OF THE CONTRACTOR TO PROVIDE AND INSTALL. IT WILL BE THE CONTRACTOR'S RESPONSIBILITY TO COORDINATE THIS WITH LIGHTING MANUFACTURER PRIOR TO BIDS AND COVER THE COST OF ALL MATERIAL AND LABOR FOR ANY ADDITIONAL OCCUPANCY SENSORS.
- ALL OCCUPANCY SENSORS LOCATIONS ARE APPROXIMATE, REFER TO MANUFACTURER'S INSTALLATION INSTRUCTIONS FOR EXACT MOUNTING AND SPACING REQUIREMENTS PRIOR TO INSTALLATION.
- ULTRASONIC CEILING MOUNTED OCCUPANCY SENSORS SHALL BE LOCATED A MINIMUM OF SIX (6) FEET FROM HVAC SUPPLY/RETURN VENTS.
- CONTRACTOR IS RESPONSIBLE FOR PROPER SENSITIVITY AND TIME DELAY SETTINGS FOR OCCUPANCY SENSORS, FOLLOWING THE MANUFACTURER'S RECOMMENDED PLACEMENT, AND FIELD VERIFICATION OF CIRCUITS WITH RESPECT TO POWER PACK PLACEMENT.
- OCCUPANCY SENSORS MOUNTED OVER DOORWAYS SHALL BE PLACED ONE (1) FOOT INSIDE THRESHOLD.
- LIGHTING CONTROL SYSTEM IS SPECIFIED AROUND THE HUBBELL AUTOMATION SYSTEM. CONTRACTOR SHALL PROVIDE ALL MATERIALS, DEVICES, WIRING, CONNECTIONS, AND PROGRAMMING NEEDED IF ANY OTHER LIGHTING CONTROL SYSTEM SUBMITS FOR APPROVAL AND IS PROVIDED.
- WATT STOPPER AND N-LIGHT ARE APPROVED EQUALS.
- CONTRACTOR SHALL GROUND ALL JUNCTION BOXES CONTAINING LOW VOLTAGE SWITCHES OR ANY OTHER TYPE LIGHTING CONTROL DEVICE WITH #12 GRD.
- SEE POWER PLANS FOR PANEL LOCATIONS.
- PROVIDE DEDICATED NEUTRALS FOR EACH MULTI-WIRE HOMERUN PER NEC.
- COORDINATE WITH LIGHTING CONTROL DETAILS ON SHEET E2.1 FOR ADDITIONAL REQUIREMENTS.
- COORDINATE WITH POWER PLANS FOR RECEPTACLE ROOM CONTROLLERS REQUIRED TO CONTROL RECEPTACLE CIRCUITRY.

SHEET NOTES:

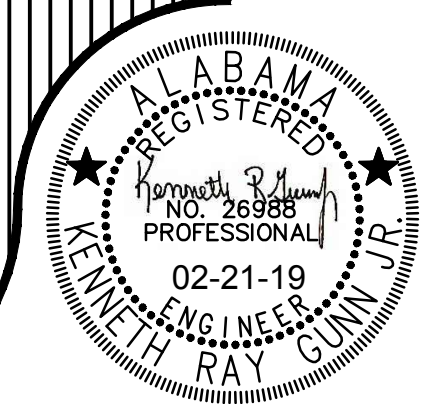
- PROVIDE WIREGUARD FOR WALL MOUNTED OCCUPANCY SENSOR IN PE GYM.
- PROVIDE WIREGUARD FOR ALL LIGHTS, EXIT SIGNS, EMERGENCY WALL PACKS, AND SWITCHES IN THIS AREA.
- CONTRACTOR SHALL SET ALL PROGRAMMABLE CONTROLS FOR "WP1" TYPE FIXTURES TO REDUCE LIGHT LEVELS TO THIRTY PERCENT (30%) BETWEEN THE HOURS OF MIDNIGHT AND 6:00 AM IN THE MORNING.
- CONTRACTOR SHALL RELOCATE EXISTING RECEPTACLE TO NEW LOCATION TO MAKE WAY FOR NEW ADDITION. INTERCEPT AND EXTEND EXISTING CIRCUITRY AS NEEDED. PROVIDE NEW METAL IN USE COVERS FOR RECEPTACLES.
- EXISTING DEVICE TO BE REMOVED. CONTRACTOR SHALL INTERCEPT AND EXTEND EXISTING CIRCUIT TO NEW LIGHT FIXTURE LOCATION.



KEY PLAN
NO SCALE
1/8" = 1'-0"
GRAPHIC SCALE

Gunn & Associates, P.C.
Consulting Engineers
3102 Highway 14
Millbrook, AL 36054
500 Southland Drive Suite 250
Hoover, AL 35226
Tel: 334.285.1273
GA#14-070

A NEW ADDITION
 to the
CLANTON MIDDLE SCHOOL GYMNASIUM
 FOR THE
CHILTON COUNTY SCHOOLS



MCKEE and ASSOCIATES
 ARCHITECTURE and INTERIOR DESIGN
 631 SOUTH HULL STREET, MONTGOMERY, ALABAMA 36104 (334) 834-9933

SHEET TITLE: PARTIAL FLOOR PLAN - LIGHTING
 JOB NO.: 14-108
 DRAWN BY: J. TILLERY
 DATE: Feb. 21, 2019
 REVISED: 03-06-19