

Addendum

No. TWO Date: 1.17.19

Project:

HVAC Improvements for Various Gymnasiums
for
The Jackson County School System
Scottsboro, Alabama

McKee Project No. 18-188

A2.1 GENERAL MODIFICATIONS:

The following changes and/or substitutions to the plans and specifications are hereby made a part of same and are incorporated in full force as part of the contract.

Bidders shall acknowledge receipt of this Addendum in writing on his Proposal Form.

A2.2 SPECIFICATION MODIFICATIONS:

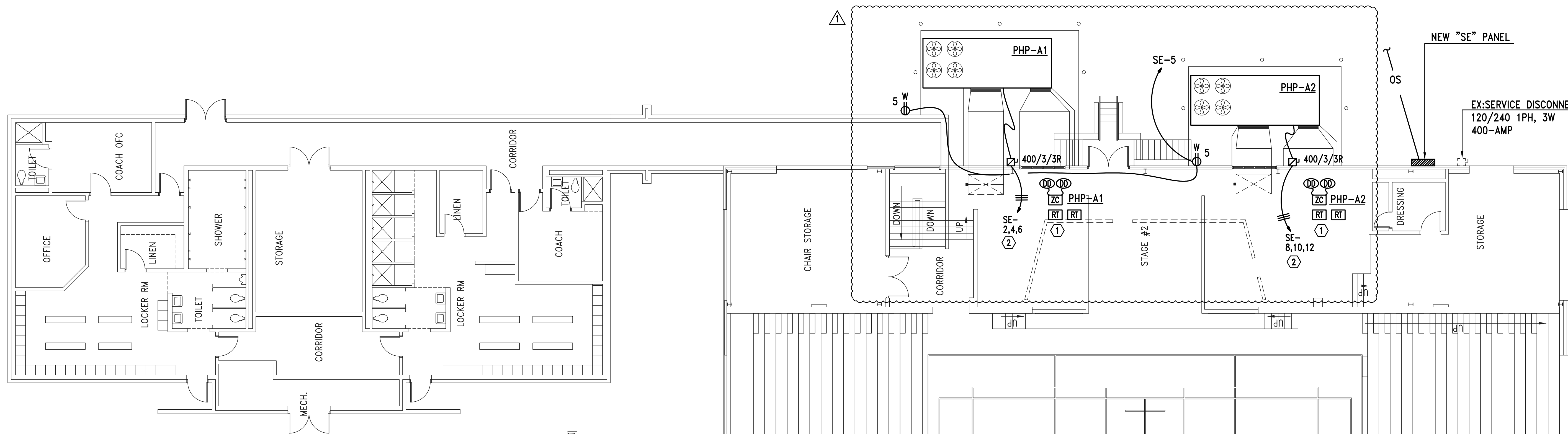
A2.3 DRAWING MODIFICATIONS:

A. See the attached Revised Drawings as follows:

Sheet E2.1 (dated 1.17.19)

B. Refer to the Drawings, Sheet M-1, delete the requirement for the factory fabricated conical take-off fitting to the DuctSox. In lieu of the conical fitting, provide an insulated tapered, low loss branch tap fitting with manual damper. The discharge end of all duct fittings to which the DuctSox attaches shall be as required by the DuctSox Manufacturer.

END OF ADDENDUM TWO

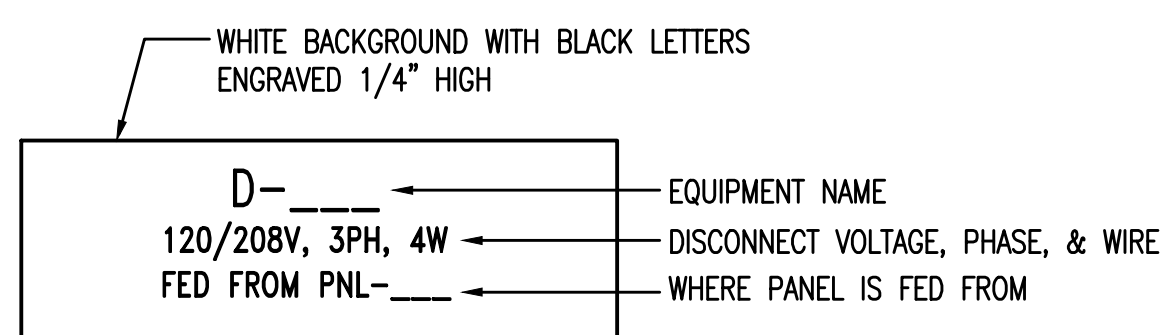


GENERAL NOTES:

- COORDINATE WITH MECHANICAL/PLUMBING DRAWINGS FOR EXACT LOCATIONS OF EQUIPMENT.
- MOUNT EXTERIOR DISCONNECTS ON EXTERIOR WALLS AT LEAST 18" FROM WINDOWS. LOCATIONS OF DISCONNECTS AND EQUIPMENT ARE SHOWN FOR DRAWING CLARITY PURPOSES ONLY.
- COORDINATE WITH MECHANICAL/PLUMBING CONTRACTORS TO INSURE OVERCURRENT PROTECTION DEVICES FOR THEIR EQUIPMENT IS SIZED PER MANUFACTURER'S RECOMMENDATIONS. ENGINEER SIZED OVERCURRENT PROTECTION ACCORDING TO MECHANICAL/PLUMBING DRAWINGS AND SPECIFICATIONS. ACTUAL EQUIPMENT SUPPLIED MAY DIFFER. ELECTRICAL CONTRACTOR SHALL WORK WITH OTHER TRADE DISCIPLINES TO INSURE ANY CHANGES WILL BE INSTALLED CORRECTLY AT THE COST OF THE PERSON MAKING THE CHANGES.
- ALL FLEXIBLE CONNECT TO HVAC UNITS SHALL BE RUN PARALLEL TO HARD SURFACE AND STRAPPED AT LEAST EVERY 2'.
- CONTRACTOR SHALL PROVIDE CONDUIT FOR MECHANICAL CONTROLS. COORDINATE EXACT LOCATIONS WITH MECHANICAL CONTRACTOR PRIOR TO ROUGH-IN.
- ALL DISCONNECTS TO HAVE NAMEPLATE AS SHOWN IN DETAIL (3) THIS SHEET, NO EXCEPTIONS.
- PROVIDE DEDICATED NEUTRALS FOR EACH MULTIWIRED HOMERUN PER NEC.
- SEE DETAIL 5/E3.1 THIS SHEET FOR MECHANICAL UNIT CONNECTION DETAIL.

SHEET NOTES:

- CONTRACTOR SHALL CONNECT NEW FIRE ALARM DEVICES TO EXISTING FIRE-LITE FIRE ALARM CONTROL PANEL. CONTRACTOR SHALL RE-TEST AND RE-CERTIFY EXISTING SYSTEM WHEN NEW WORK IS COMPLETE. CONTRACTOR SHALL EXPAND EXISTING FIRE ALARM SYSTEM AS REQUIRED TO ACCOMMODATE NEW DEVICES.
- CONTRACTOR SHALL PROVIDE 3#250KCMIL & 1#4GRD - 3 1/2".



TYPICAL NORMAL POWER NAMEPLATE

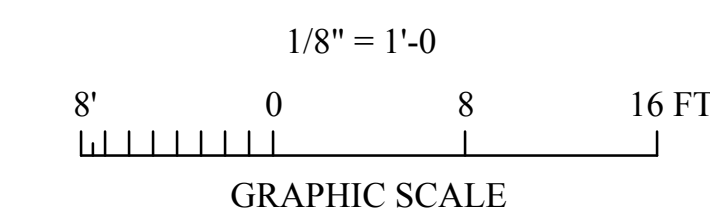
2 DETAIL - TYPICAL DISCONNECT NAMEPLATE
NO SCALE



KEY PLAN
NO SCALE

APPROXIMATE LOCATION OF EXISTING FIRE-LIGHT FIRE ALARM CONTROL PANEL

1 FLOOR PLAN - ELECTRICAL
SCALE: 1/8"=1'-0"



Gunn & Associates, P.C.
Consulting Engineers
3102 Highway 14
Millbrook, AL 36054
Tel: 334.285.1273
500 Southland Drive Suite 250
Hoover, AL 35226
GAA#18-341

SHEET TITLE : FLOOR PLAN - ELECTRICAL

MCKEE JOB # : 18-188

DRAWN BY : J. TILLERY

DATE : 12-11-18

REVISED DATE : 01-17-19

REVISED DATE :

REVISED DATE :

SHEET NO. : **E2.1**

HVAC IMPROVEMENTS FOR SECTION HIGH SCHOOL

GYMNASIUM

FOR THE

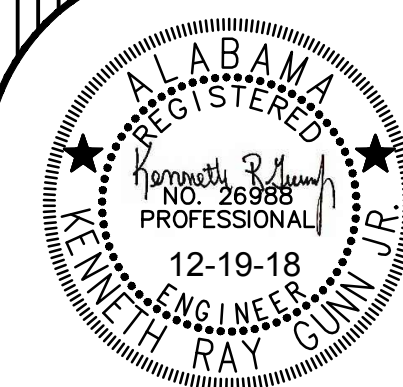
JACKSON COUNTY BOARD OF EDUCATION

SCOTTSBORO, ALABAMA

MCKEE and ASSOCIATES

ARCHITECTURE and INTERIOR DESIGN

631 SOUTH HULL STREET MONTGOMERY, ALABAMA 36104 (334) 834-9933





ZGOUVAS, EIRING & ASSOCIATES
CONSULTING ENGINEERS, INC.

HVAC Addendum Section High School

January 17, 2019



1. Refer to the Drawings, Sheet M-1, delete the requirement for the factory fabricated conical take-off fitting to the DuctSox. In lieu of the conical fitting, provide an insulated tapered, low loss branch tap fitting with manual damper. The discharge end of all duct fittings to which the DuctSox attaches shall be as required by the DuctSox Manufacturer.