

Addendum

No. ONE Date: 11-19-18

Project: PE Activity & Pre-K/Media Center Building for
Midland City Elementary School
Ozark, Alabama

PROJECT NO. 18-219
BC # 2018491

A1.1 GENERAL

- A. The following changes and/or substitutions to the plans and specifications are hereby made a part of same and are incorporated in full force as part of the contract.
- B. Bidders shall acknowledge receipt of this Addendum in writing on his Proposal Form.

A1.2 SPECIFICATIONS –

- A. Refer to attached **Section 01000, Alternates (Revised 11.19.18)**, herein.
- B. Refer to Section 08700, Hardware - Item 1 – Finish Hardware, page 7, Finishes - Item 4 add 626, satin chrome as an acceptable finish.

A1.3 DRAWINGS –

- A. See sheet A8.1 - Delete reference to door #'s A106f & A106g.
- B. Clarification – Base Bid pricing shall also include the following;
 - a. Door #A108b – Non-Fire rated, Insulated metal door, Painted and Non-Fire rated Hollow Metal frame, Painted. Add to Hardware set #03 in lieu of hardware set #6.
 - b. Use wall section 4/A6.2 for exterior South wall construction. Fire wall will be replaced with Non-Fire rated 8" CMU wall. Plumbing chase & column line #5 to remain per Drawing A1.1.
 - c. Refer to Canopy Plan – Base Bid on sheet A3.1
 - d. Refer to C-1 Revised drawing dated 11-19-18 attached herein;
 - e. See Revised Alternates, Section 01000 (dated 11.19.18) attached herein;
- C. See the attached **Revised Drawing** as follows:
 - 1. C-1 Site Plan dated 11-19-18

END OF ADDENDUM ONE

SECTION 01000 - ALTERNATES

PART 1 - GENERAL

RELATED DOCUMENTS

Drawings and general provisions of the Contract including General and Supplementary Conditions and Division 1 Specification sections apply to work of this section.

DESCRIPTION OF REQUIREMENTS

Definition: An Alternate is an amount proposed by bidders and stated on the Proposal Form that will be added to or deducted from Base Bid amount if the Owner decides to accept a corresponding change in either scope of work or in products, materials, equipment, systems or installation methods described in Contract Documents.

Coordination: Coordinate related work and modify or adjust adjacent work as required to ensure that work affected by each accepted Alternate is complete and fully integrated into the project.

Notification: Immediately following award of Contract, prepare and distribute to each party involved notification of the status of each Alternate. Indicate whether Alternates have been accepted, rejected or deferred for consideration at a later date. Include a complete description of negotiated modifications to Alternates, if any.

Schedule: A "Schedule of Alternates" is included at the end of this section. Specification section referenced in the Schedule contain requirements for materials and methods necessary to achieve the work described under each Alternate.

Include as part of each Alternate, miscellaneous devices, appurtenances and similar items incidental to or required for a complete installation whether or not mentioned as part of the Alternate.

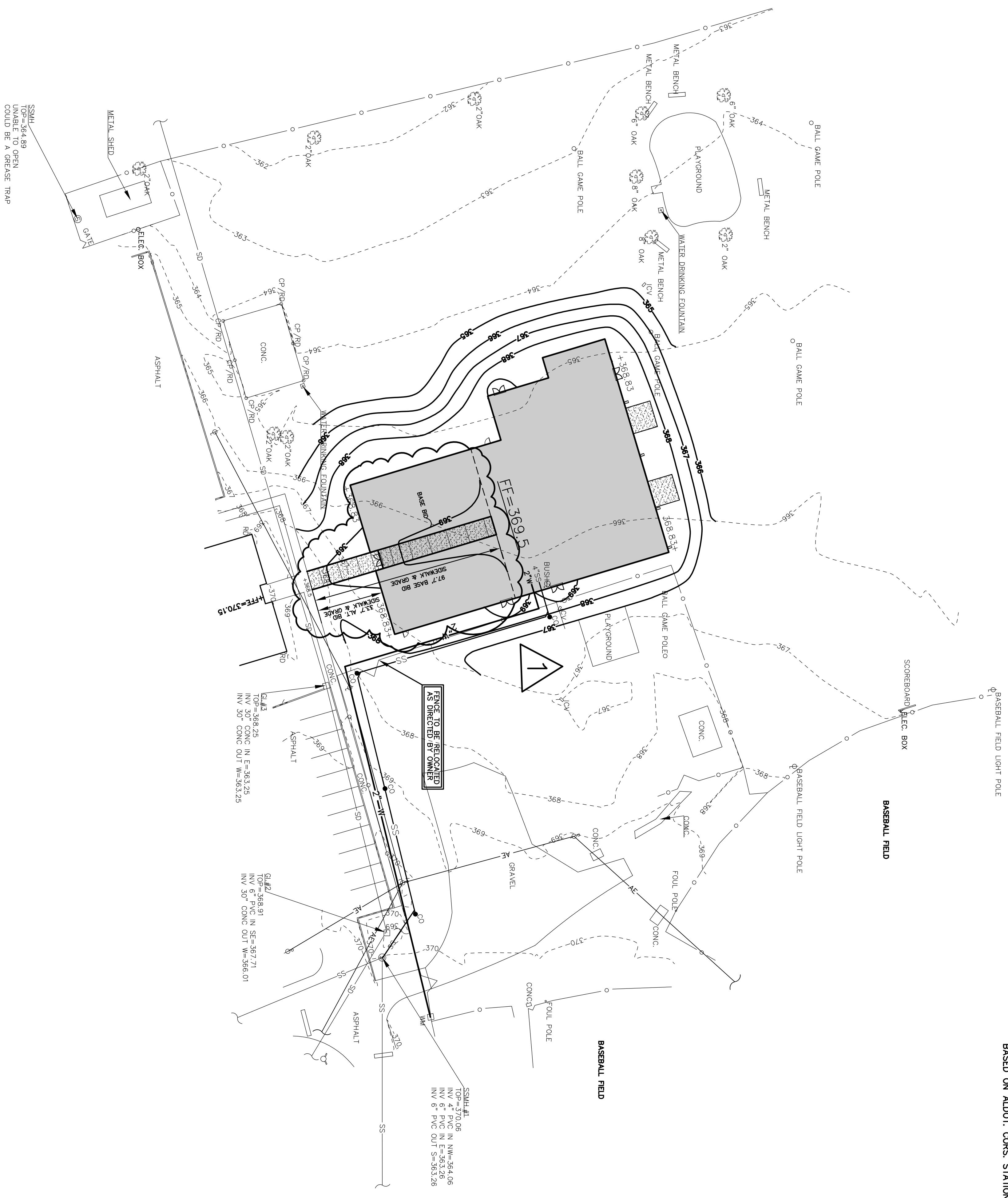
SCHEDULE OF ALTERNATES

ADDITIVE Bid Alternate #1 Cost for construction of building pad only per drawing C-1 dated 11-19-18 to include grading, topsoil and seeding.

ADDITIVE Bid Alternate #2 Cost for construction of building, including site work and work as indicated as shaded areas on drawings.

END OF SECTION 01000

NOTE: HORIZONTAL AND VERTICAL CONTROL BASED ON ADOT CORRS. STATION.

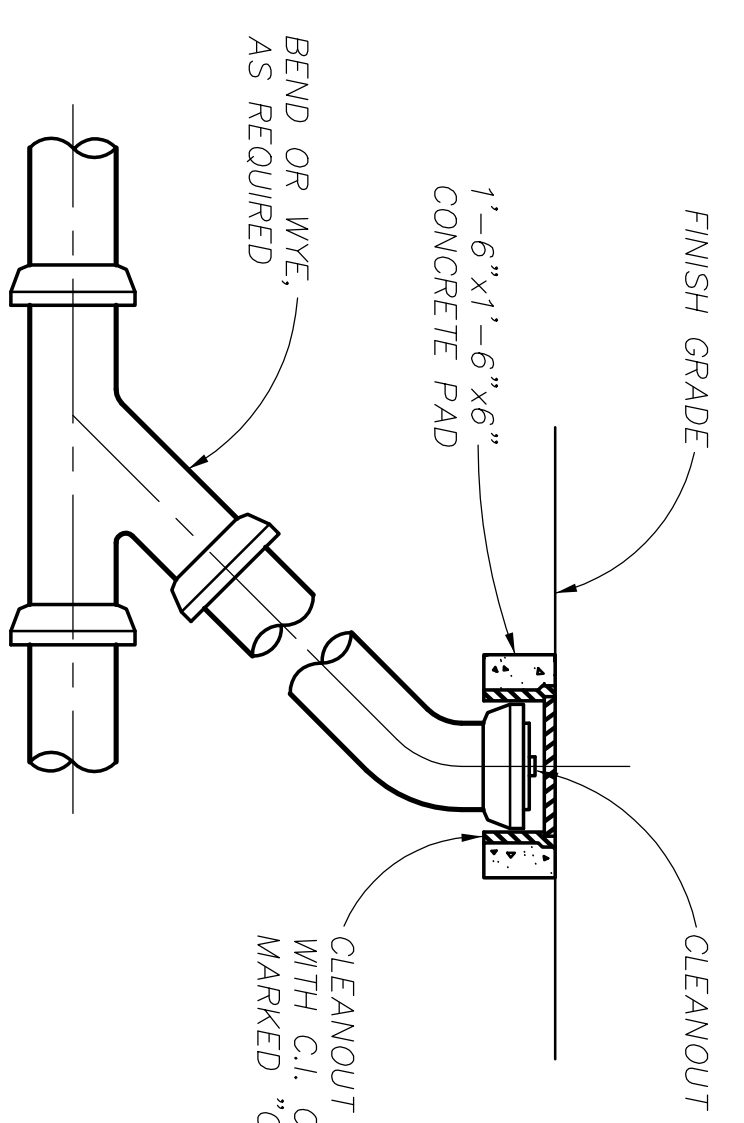


LEGEND

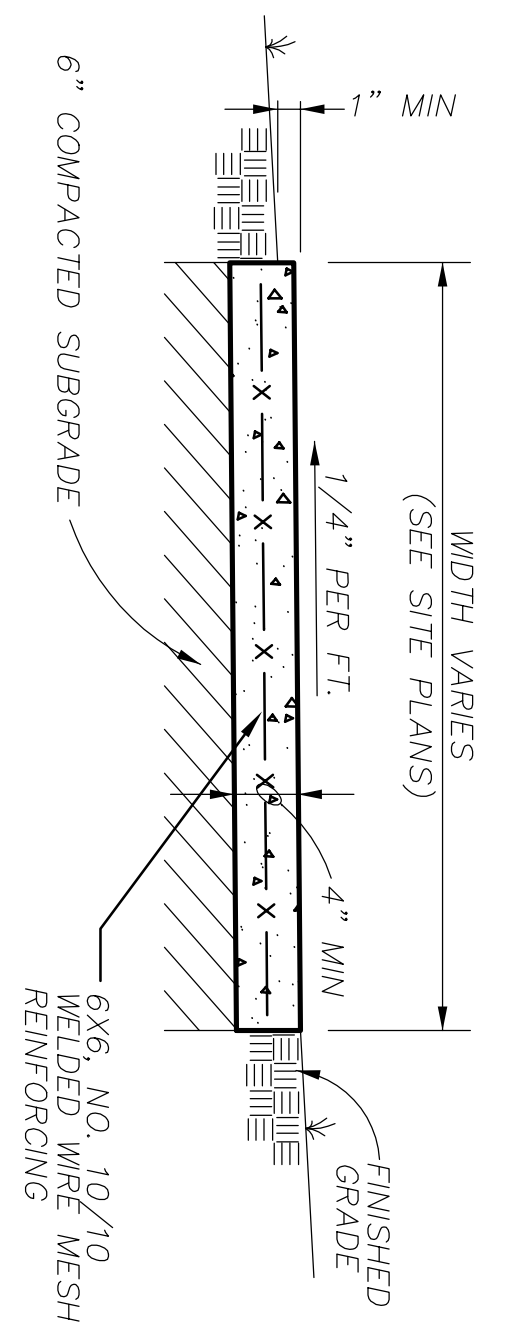
DESCRIPTION	EXISTING	NEW
BUILDING	[Symbol]	[Symbol]
CURB	[Symbol]	[Symbol]
CURB & GUTTER	[Symbol]	[Symbol]
CONCRETE PAVEMENT	[Symbol]	[Symbol]
ASPHALT PAVEMENT	[Symbol]	[Symbol]
SANITARY SEWER MANHOLE	[Symbol]	[Symbol]
SANITARY SEWER LINE	[Symbol]	[Symbol]
CLEAN-OUT	[Symbol]	[Symbol]
GRADE CONTOUR	[Symbol]	[Symbol]
SPOT ELEVATION	[Symbol]	[Symbol]
WATER METER	[Symbol]	[Symbol]
WATER LINE	[Symbol]	[Symbol]
GRATE INLET	[Symbol]	[Symbol]
STORM DRAIN LINE	[Symbol]	[Symbol]
FIRE HYDRANT	[Symbol]	[Symbol]

NOTES:

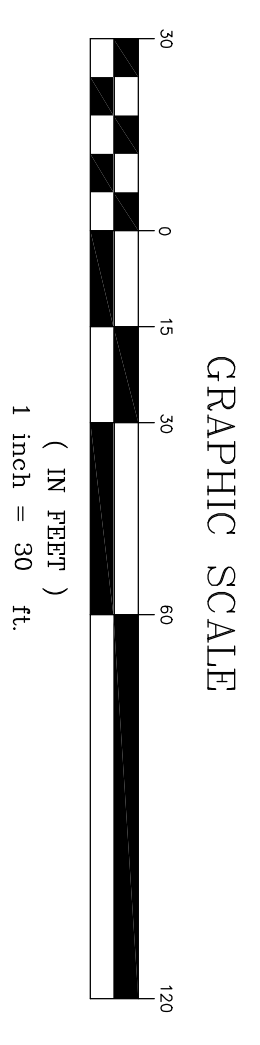
1. THE UNDERGROUND UTILITIES SHOWN HAVE BEEN LOCATED FROM FIELD SURVEY INFORMATION AND EXISTING DRAWINGS. THE SURVEYOR MAKES NO GUARANTEE THAT THE UNDERGROUND UTILITIES SHOWN COMPRISE ALL SUCH UTILITIES IN THE AREA, EITHER IN SERVICE OR ABANDONED. THE SURVEYOR FURTHER DOES NOT WARRANT THAT THE UNDERGROUND UTILITIES SHOWN ARE IN THE EXACT LOCATION INDICATED ALTHOUGH HE DOES CERTIFY THAT THEY ARE LOCATED AS ACCURATELY AS POSSIBLE FROM THE INFORMATION AVAILABLE. THE SURVEYOR HAS NOT PHYSICALLY LOCATED ALL OF THE UNDERGROUND UTILITIES.



SIDEWALK DETAIL



SCORE WALKS AS SHOWN ON THE SITE LAYOUT PLAN, CONSTRUCT 1/2" EXPANSION JOINTS @ MAX. 40' INTERVALS.



PEC
 PROFESSIONAL ENGINEERING CONSULTANTS, LLC
 1000 Montgomery Avenue, Suite 3004
 Montgomery, Alabama 36104
 Tel: (334) 262-7299 Fax: (334) 262-7298
 P.E.C. 008 #17-026

PE ACTIVITY BUILDING ADDITION
 TO
 MIDLAND CITY ELEMENTARY SCHOOL
 FOR THE
 DALE COUNTY BOARD OF EDUCATION
 OZARK, ALABAMA

McKEE and ASSOCIATES
 ARCHITECTURE and INTERIOR DESIGN
 631 SOUTH HULL STREET MONTGOMERY, ALABAMA 36104 (334) 634-9933



11/19/18

SHEET TITLE: SITE PLAN

MOCKE JOB #: 18.218

DRAWN BY: CD

DATE: 11.9.18

REVISED DATE: 11.19.18

REVISED DATE:

SHEET NO.: C-1