

Addendum

No. TWO Date: 3.6.19

Project:

A PE Facility for
Verbena High School for the
Chilton County Board of Education
Clanton, Alabama

McKee Project No. 19-120

A2.1 GENERAL MODIFICATIONS:

The following changes and/or substitutions to the plans and specifications are hereby made a part of same and are incorporated in full force as part of the contract.

Bidders shall acknowledge receipt of this Addendum in writing on his Proposal Form.

A2.2 SPECIFICATION MODIFICATIONS: NONE

A2.3 DRAWING MODIFICATIONS:

See the attached Revised Drawings as follows:

Sheet P1 (dated 3.06.19)

END OF ADDENDUM TWO

PLUMBING FIXTURE SCHEDULE

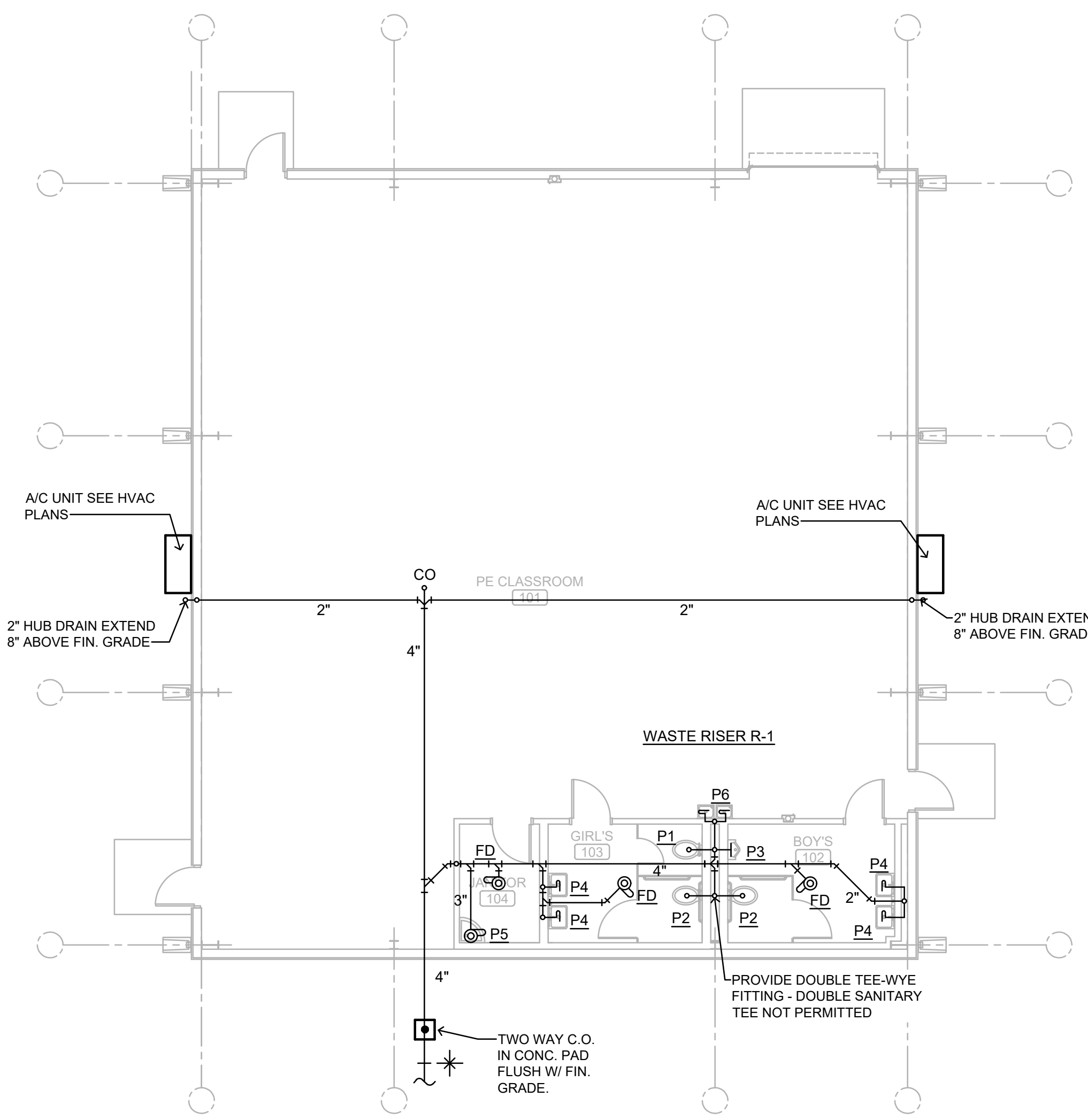
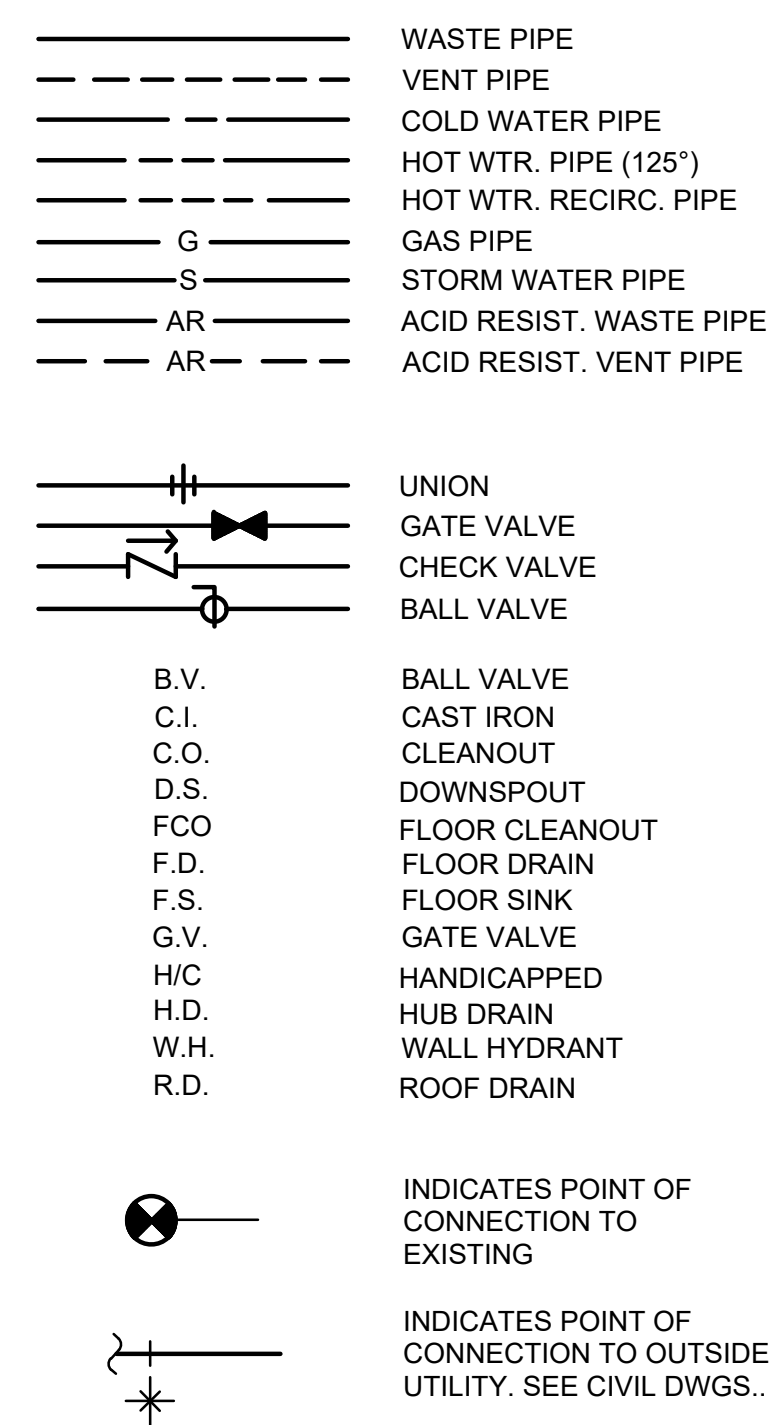
NO.	FIXTURE	WASTE	C.W.	H.W.	REMARKS
P1	WATER CLOSET	3"	1"	—	FL. MTD. - REG.
P2	ADA WATER CLOSET	3"	1"	—	FL. MTD. - ADA
P3	URINAL	2"	3/4"	—	WALL HUNG - SEE ARCH. PLANS FOR MTD. HEIGHT
P4	ADA LAVATORY **	1 1/4"	1/2"	1/2"	WALL HUNG - SEE ARCH. PLANS FOR MTD. HEIGHT
P5	MOP SINK	3"	1/2"	1/2"	--
P6	SPLIT LEVEL EWV	1 1/2"	1/2"	—	WALL HUNG - HIGH/LOW

** PROVIDE A WATER TEMPERATURE LIMITING DEVICE EQUAL TO SYMMONS #8-210-CX (ASSE STD. 1070) WITH 1/2" TEMPERED WATER LINE TO FAUCET.

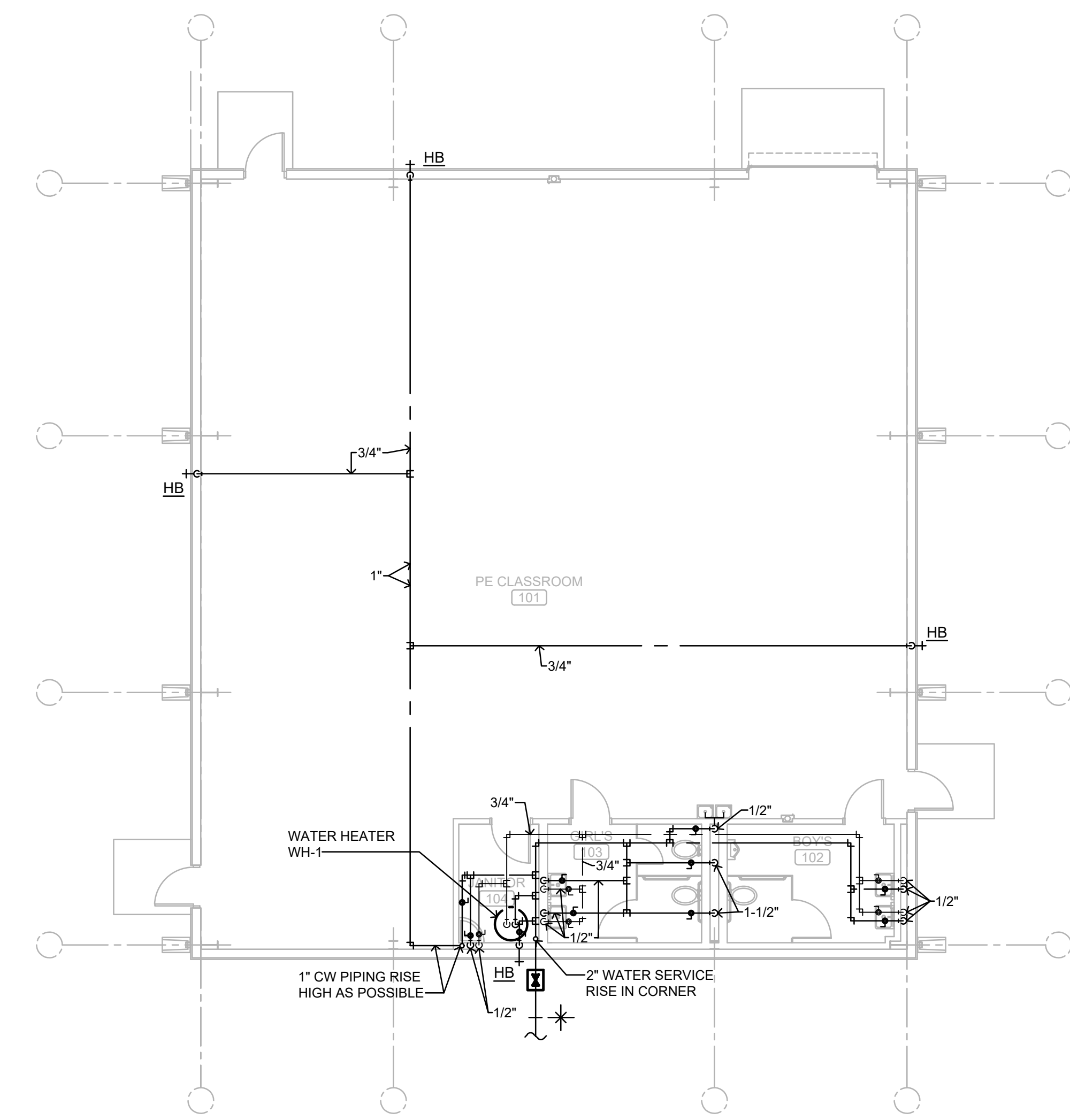
NOTES

- ROUGH WATER CLOSET AND URINAL FLUSH VALVE SO THAT THE FLUSH TUBE IS VERTICALLY STRAIGHT.
- PROVIDE A DEEP SEAL P-TRAP FOR EACH FLOOR DRAIN AND HUB DRAIN.
- PROVIDE A VACUUM BREAKER FOR EACH WALL HYDRANT AND HOSE BIBB.
- RUN ALL WATER PIPING WITHIN BUILDING INSULATION ENVELOPE.
- COORDINATE ALL PIPING RUNS WITH THE ELECTRICAL CONTRACTOR. DO NOT RUN PIPING OVER ELECTRICAL TRANSFORMERS, PANELS AND EQUIPMENT. MAINTAIN CLEARANCE AS REQUIRED BY THE NATIONAL ELECTRICAL CODE. (GENERALLY MIN. 3 FEET).
- ALL WASTE AND VENT PIPING INSIDE RETURN AIR PLENUM SPACES SHALL BE CAST IRON PIPE AND FITTINGS AS SPECIFIED.
- MAINTAIN MIN. OF 10 LINEAR FEET FROM PLUMBING VENTS TO HVAC FRESH AIR (OUTSIDE AIR) INTAKES.
- H.C. - HANDICAP - FIXTURES AND INSTALLATION SHALL MEET AMERICANS WITH DISABILITIES ACT (A.D.A.) REQUIREMENTS.
- FLUSH VALVE HANDLE FOR HANDICAP WATER CLOSET SHALL BE LOCATED ON WIDE SIDE OF TOILET STALL AREA TO MEET A.D.A. REQUIREMENTS.
- ROUGH HANDICAP WATER CLOSET 18" FROM FINISHED WALL TO CENTERLINE OF WATER CLOSET. MEASURED FROM FACE OF SHORT SIDE OF STALL TO FINISHED WALL.
- PROVIDE A READILY ACCESSIBLE CLEANOUT AT OR NEAR THE BASE OF EACH WASTE AND VENT STACK PER PLUMBING CODE AND SPECS.
- WATER SUPPLY SYSTEM IS DESIGNED FOR STATIC PRESSURE OF 50 TO 75 PSI. GAUGE CITY WATER SUPPLY TO VERIFY THAT THE PRESSURE IS WITHIN THOSE LIMITS. PROVIDE WATER PRESSURE REDUCING VALVE, IF REQUIRED TO MEET DESIGNED WATER PRESSURE.
- PROVIDE A BALL VALVE ON EACH SIDE OF EVERY DIELECTRIC UNION TO FACILITATE ITS REMOVAL.

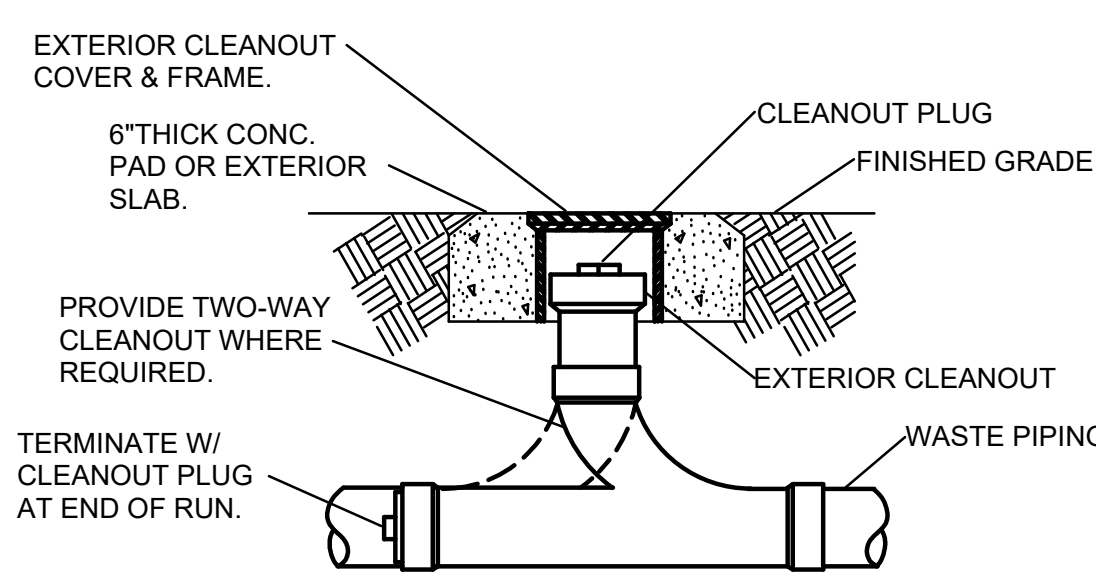
LEGEND



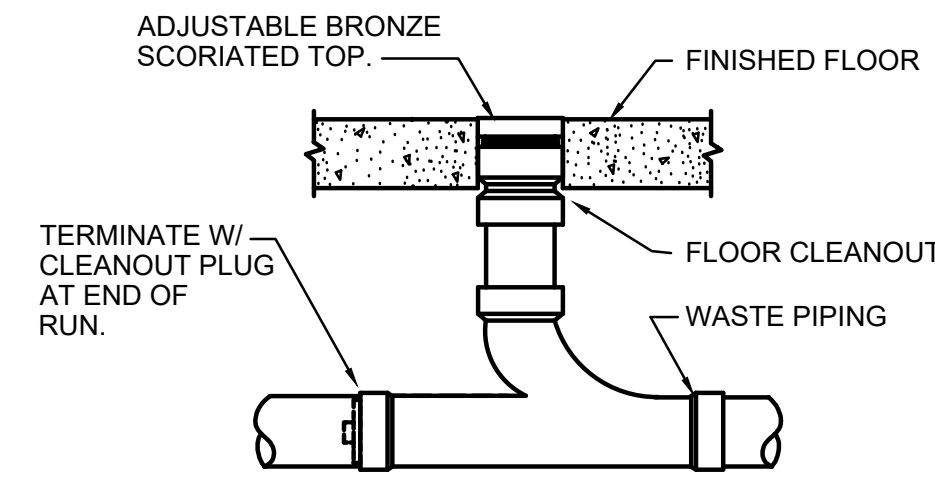
SHOWING WASTE PIPING
PLUMBING FLOOR PLAN
SCALE: 1/8" = 1'-0"



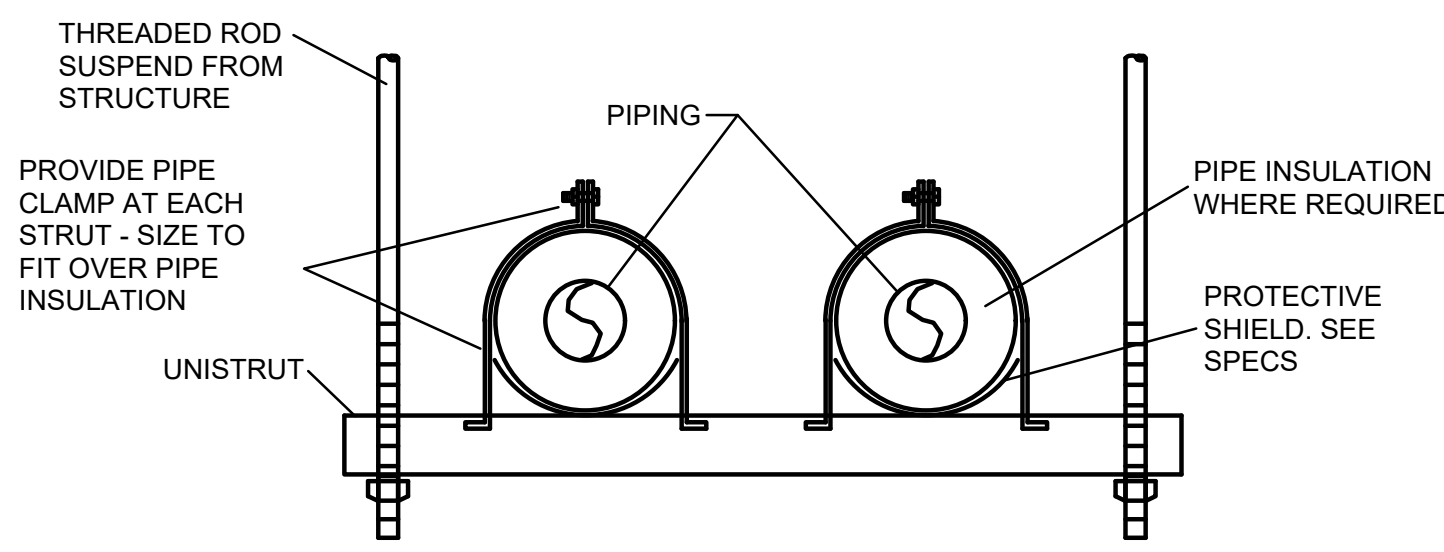
SHOWING WATER PIPING
PLUMBING FLOOR PLAN
SCALE: 1/8" = 1'-0"



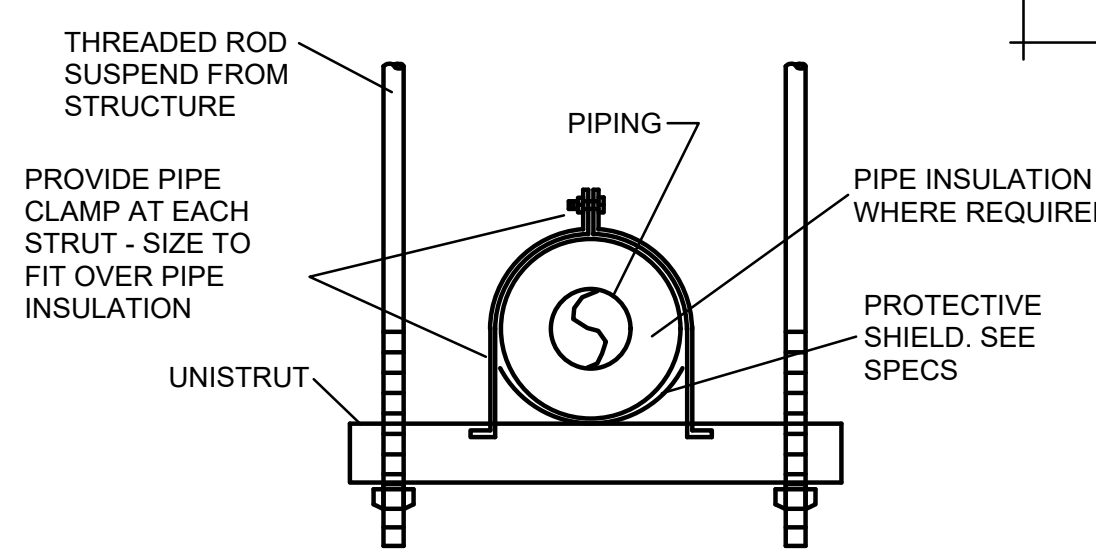
TYP. EXTERIOR CLEANOUT DETAIL
NO SCALE



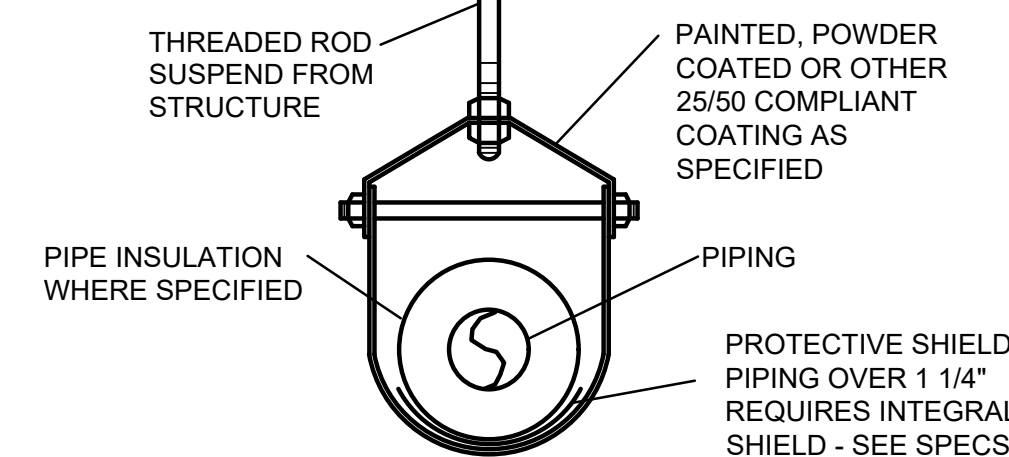
TYP. FLOOR CLEANOUT DETAIL
NO SCALE



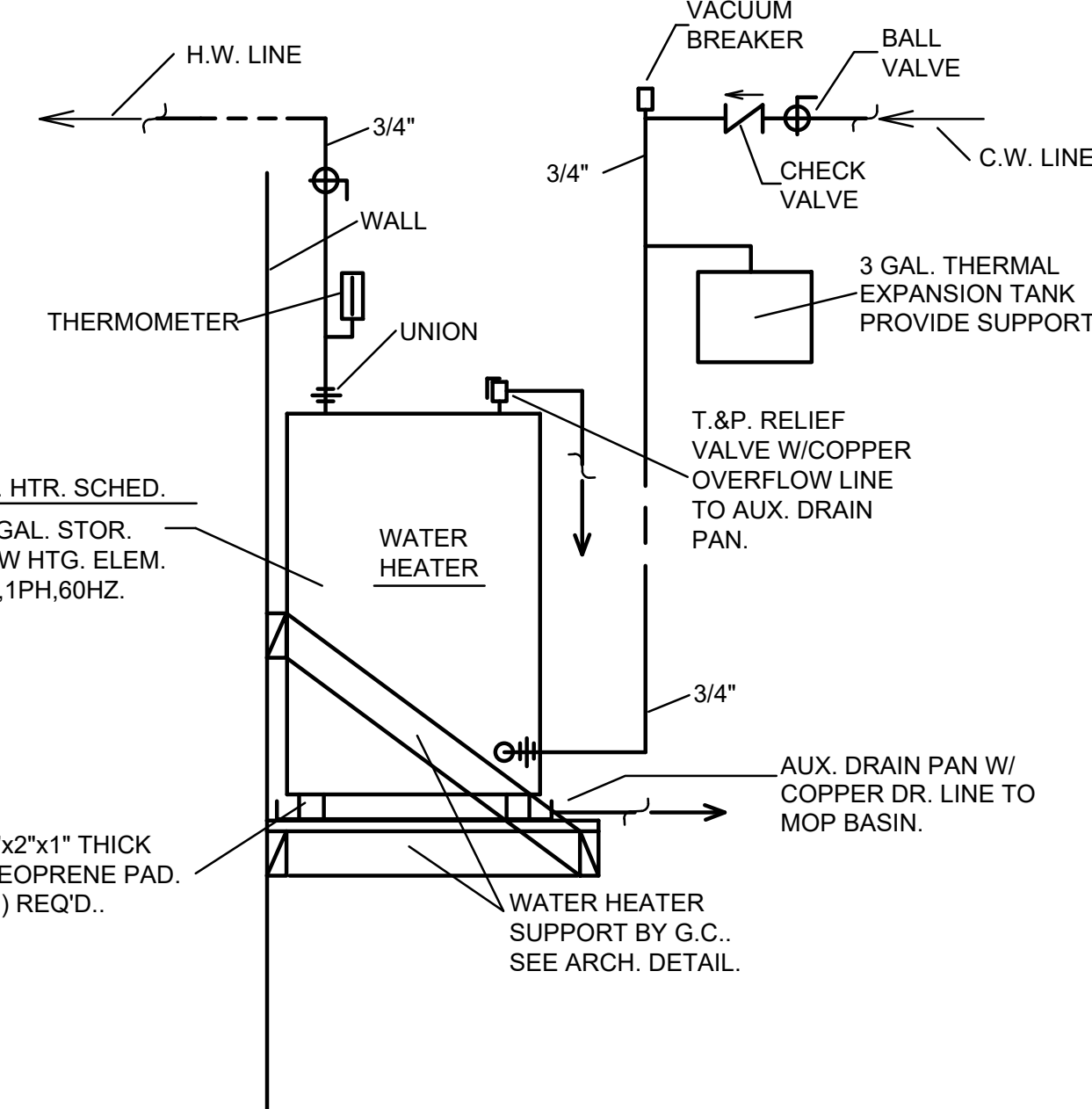
TYP. PIPE HANGER DETAIL
NO SCALE



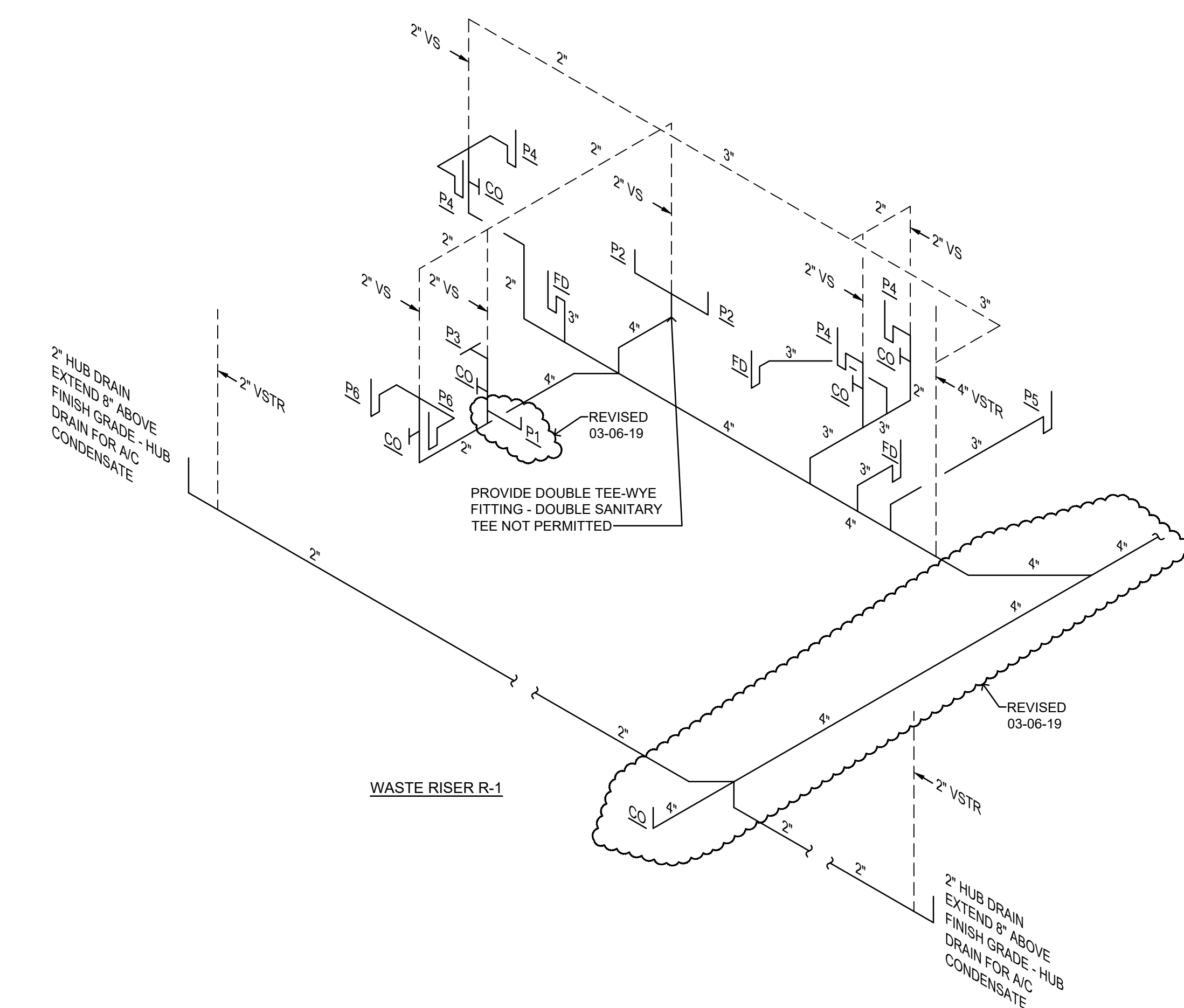
TYP. PIPE HANGER DETAIL
NO SCALE



TYP. PIPE HANGER DETAIL
NO SCALE



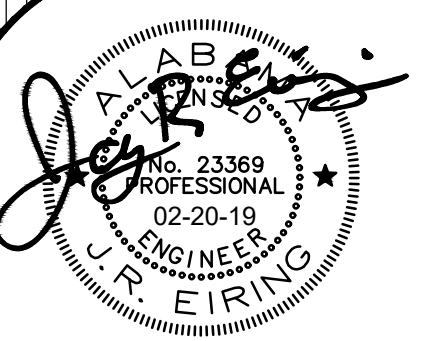
WATER HEATER DETAIL
NO SCALE



PROVIDE A READILY ACCESSIBLE CLEANOUT AT OR NEAR THE BASE OF EACH WASTE AND VENT STACK PER PLUMBING CODE AND SPECS.

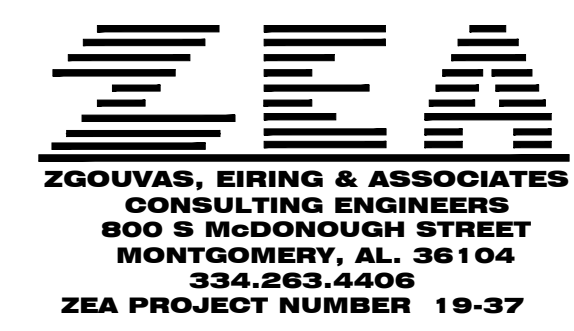
A PE FACILITY
FOR
VERBENA HIGH SCHOOL
FOR THE
CHILTON COUNTY BOARD OF EDUCATION
 CLANTON, ALABAMA

MCKEE and ASSOCIATES
 ARCHITECTURE and INTERIOR DESIGN
 637 SOUTH HULL STREET MONTGOMERY, ALABAMA 36104 (334) 834-9933



SHEET TITLE : PLBG. FLOOR PLANS

MCKEE JOB # : 19-120
 DRAWN BY : C. WARD
 CHECKED BY : T. ZGOUVAS
 DATE : 02-20-19
 REVISED DATE : 03-06-19
 REVISED DATE :
 REVISED DATE :



SHEET NO. : **P1**